



**CONTENTS**

|                     |                    |                     |
|---------------------|--------------------|---------------------|
| Auctions..... 7     | <b>FINE LINE</b>   | Lawn&Garden.. 18    |
| Auto Parts ..... 15 | <b>ROUTE 66</b>    | Miscellaneous.. 18  |
| Automobiles.... 19  | <b>AUTO SALES</b>  | Mobile Homes.. 19   |
| Boats..... 8        | Page 3             | Motorcycles..... 2  |
| Cattle ..... 16,17  | <b>Today in Ag</b> | Music..... 7        |
| Classic Cars.... 11 | Page 4-5           | Oil/Minerals..... 8 |
| Dogs/Cats..... 2    | <b>TRADIO</b>      | Opportunities... 15 |
| Events..... 11      | Page 6             | Plumbing..... 11    |
| Farm Equip..... 1   | <b>MCKINSEY</b>    | Real Estate..... 8  |
| Farms..... 8        | <b>Ford</b>        | Roofing..... 15     |
| Firewood..... 7     | Page 19            | Seed..... 11        |
| For Rent..... 1     | <b>WINDY</b>       | Services..... 10    |
| Garage Sale.... 11  | <b>NISSAN</b>      | Trailers..... 8     |
| Golf..... 3         | Page 20            | Tree Services... 14 |
| Hay/Feed..... 9     |                    | Trucks/Trailers. 11 |
| Help Wanted..... 9  |                    | Want to Buy..... 3  |
| Horses..... 7       |                    | Weather..... 7      |
| Hunting..... 4      |                    | Welding..... 8      |

**Farm Equipment**



Sub soiler plow, \$3,000, Ripper plow, \$3,000, tires in good condition, Texola area, 806-256-3781. 4/15

John Deere 4895 Swather, 2700 HRS, 18 FT sickle header with new sections/drives, steel conditioners, \$32,000, Sentinel, OKLA. 580-393-1301. 4/16

2000 JD 566 Round Baler, 10,960 bales, been thru JD shop, shedded, net and twine, great shape mechanically, couple dings, Leedey, \$12,500, 580-821-4811. 2/14

JD 500 grain cart, excellent paint and tires, \$6,800, 580-445-8657. 4/15

30T bin; feed bunks; dog kennel panels; 580-541-8844. 4/14

JD 4455 MFWD, 15 speed, 6804 hours, front fenders, quick hitch, 3 hydraulics, duals, good paint and interior, new rear tires, \$51,000, Bill Cortney, Ft. Cobb, 580-550-0094, 405-643-2815. 4/14

Great Plains 606 NT 6' grain drill, brand new, \$14,000, located in Reynon, OK, 404-317-6173. 4/13

Like brand new 8 ton Doyle MFG fertilizer and lime spreader with hyd spinners and engage, \$20,000, 580-574-5375. 4/13

**WANT TO BUY:** John Deere tractors, running or not, 580-243-8610. 52/1

**Wanted:** Tractors dead or running, 2WD or 4WD, any kind, any size up to 2020 models, 405-641-7728. 26/26

**WANTED:** JD SQUARE BALERS, 348-346-336-224-214 any condition, 405-641-7728. 29/26

T&S trip feeder 1500# with tarp and controls no rust and works great. \$2000, please text me at 405-659-2677, Thxs 4/50

**For Rent**



Commercial building 4,000 sq ft, 2 acre lot with two over head shop doors 1531 South 14 Clinton, Contact Kathy Boone 580-445-8761, very reasonable rent. 4/15

3 bedroom, 2 bath, in Burnsflat, single home, new LED lights, carpet and paint, fenced backyard, stove and dishwasher in unit, \$580/month, 580-243-8702. 4/15

**- ELECT -**  
**Jason Kos**  
 for Merritt School Board, Seat #2  
**VOTE Tuesday, April 5th, 2022.**

**INSULATED STEEL BUILDINGS**

**PORTABLE**

**Certified 90 MPH Wind Tested**

- DOUBLE WALLED STEEL
- 1 3/4" POLYSTYRENE INSULATION
- 3/4" B-B TREATED PLYWOOD

Workshop, Cabin, Playhouse  
Office or Storage

**PETZOLD BUILDINGS, LLC**

Manufactured and on display  
1 mile north of Blair, Oklahoma on Hwy. 283  
Lots also located in Wichita Falls and Lawton

**Shop: 580-563-2818**  
**Residence: 580-477-1499**

[www.petzoldportables.com](http://www.petzoldportables.com)

**MACK FORD WELDING**  
 Custom Built Metal Buildings & Carports

580-383-8676 CLINTON, OK

**NEW ROOFING**

Keep It Simple. Make It New.

**ROOFING • SIDING • GUTTERING**

FREE ESTIMATES!  
 FULLY INSURED  
 HABLAMOS ESPANOL

BBB A+ rating  
 LIC#80000621

**580-309-4323**  
[newroofingok.com](http://newroofingok.com)

**XIT** ★ ★ ★ ★ ★ **XIT**

**UPCOMING AUCTIONS**  
 Real Estate • Farm Equipment • Heavy Equipment • Your Auction

**SAT. APRIL 2 - 10AM** Kiowa County Farmers & Ranchers  
 Lone Wolf, OK

**SAT. APRIL 30 - 10AM** Albert Korfman Retirement Auction  
 Custer City, OK

**SAT. MAY 7 - 10AM** Quality Equipment Auction  
 Altus, OK

**LIVE and ONLINE Auctions - xitauctions.com**  
 Aubrey Latham, Auctioneer 580.393.4440  
 "XIT AUCTIONS READY TO WORK FOR YOU"

**Most Competitive Price on Farm Fuel**

Most competitive price in the area  
 Filtering to 10 micron for cleaner fuel  
 Outstanding service  
 \* Free delivery within 50 miles for minimum 500 gallon order

**Call 580-339-8111**

**Flo Fuel**

Flo Fuel 100 S. Monroe, Suite 17 - Elk City, OK

**WHITTE DENTAL CARE**

**Drs. Mori & Teri White, DDS**

**Sedation Dentistry Calms Fears...**  
 Take a *pill* and *snooze* through your dental appointment.

For many Americans, going to the dentist is a frightful event. If you are one of the 145 million people who avoid the dentist due to fear, we have the solution... Sedation Dentistry.

You can now experience your dental appointment through a totally relaxed and comfortable environment. With the help of Sedation Dentistry, you will wake up to find that your dental appointment is over and the restorations have been completed painlessly.

For those with a busy schedule, we can accomplish more dentistry in one appointment which means fewer visits to the dentist.

Sedation Dentistry is available for everything from simple restoration to the most complex procedures. We are very sensitive to our patients needs, especially those with high fear and apprehension. Now we can put an end to anxiety with this safe and wonderful technique of sedation.

We are proud to be able to offer Sedation Dentistry and offer hope to those who have been avoiding the dentist due to fear. If you would like to know more, call our team with your questions.

**Drs. Mori & Teri White**  
 practice cosmetic, implant and family dentistry at  
 2802 8th Street,  
 Woodward, OK 73801

Telephone 580-256-4301  
 See our website at [www.woodwarddentist.com](http://www.woodwarddentist.com)

**sedation**



**Saint Matthew**  
**11TH ANNUAL FRIDAY**  
**FISH FRY**  
**YOUTH FUNDRAISER**



**FRIDAYS 5:00-7:00 PM**  
**MARCH 4 - 11 - 18 - 25**  
**APRIL 1- 8**

**ALL YOU CAN EAT!**  
**Includes Fish, Fries, Hushpuppies,**  
**Coleslaw, Homemade Beans,**  
**Homemade Desserts & Drink!**

**ADULTS \$15, STUDENTS \$10,**  
**UNDER 5 FREE**

**We accept Cash, Checks & Credit Cards**

**Carryouts Available**

**St. Matthew Catholic Church**  
**3001 East Hwy. 66, Elk City, OK**  
 (on access Rd East of Hwy 34, by Love's Truck Stop)



**Beautiful Siberian Husky puppies, 8 weeks old, ACA registry, reds and blacks, male and female, up to date on vaccines, affectionate and good-natured disposition. Text 580-331-9159**

**Pet rats for sale, born 2/5/21 in Weatherford, male and female, adopting out in same sex pairs, \$30/pair, text 520-368-2699 for more info. 1/13**

**AKC Pomeranian 5 weeks old, now taking deposits, 1M,2F, Ponca City, OK, 917-202-8293, 503-349-3904. 4/13**



**Mini Aussie pups for sale, price range \$800-\$1500, text 580-603-3602. 2/14**



**Red Heeler pups for sale, price range \$800-\$1500, text 580-603-3602. 2/14**

**AKC registered labs, full registration, 2 yellow females, 1 black female; 3 yellow males, 1 black male; will be up-to-date on shots, worming, due-claws removed, and micro-chipped, \$600, Okeene OK, 580-822-5776. 2/14**

**Baby bunnies available, text 580-445-0498 for more information. 4/16**

**Labordoodle puppies! 5 males, 1 female (Black and Apricot in color), For more information call or text 580-334-3106. 4/15**

**AKC male dachshund puppies, ready for their forever home, 580-727-5326, Buffalo. 4/15**

**ASDR Tiny Toy Aussie, Red Tri Male, 2 Red Tri Females, \$800 CASH, 580-302-3646. 4/13**



**2017 Harley Limited, 7500 miles, Black Quartz, no rides, no personal checks, \$20,500, 580-649-9705, Altus, Serious inquiries only. 4/13**

**We Buy & Sell Coins & Gold**  
**WE PAY MORE than out of town Gold & Silver Buyers**  
**WE PAY CASH!**  
 NEW HOURS  
 Monday - Friday 9am-4:30pm  
 Call for Appointment if Closed!



**Amarillo Gold & Silver Exchange**  
 We Pay Cash!  
 1622 S. Western, Amarillo, TX  
 806-352-5552  
**HABLAMOS ESPAÑOL**



**FINANCING NOW AVAILABLE**

**METAL ROOFING**  
**SHINGLES**  
**FLAT ROOFS**  
**SIDING**  
**PAINTING**  
**SEAMLESS GUTTERING**

**CALL FOR DETAILS**  
**580-530-0033**

**Commercially Endorsed • Free Estimates • Fully Insured** OK LIC#80002994



**MFR**  
 MCABEE FOX ROOFING LLC

**PREFERRED CONTRACTOR**

**REMINGTON STATION WINSOR POINT & VENTURA HEIGHTS**

**\$137 MOVE IN SPECIAL**



**LIMITED TIME OFFER ONLY ENDS 3-31-22**

**FOR INQUIRIES +1 580.225.4495**

**30' 2013 KZ SPORTSMEN TRAVEL TRAILER**  
**BUNK BEDS • 1 SUPER SLIDE OUT • ELECTRIC AWNING**



**READY TO GO - SLEEPS 6!**  
**\$19,900 (Negotiable) | Call or Text 580-243-7855**

**GIDEON STEEL PANEL CO.**

**Call Today! 405.942.7878**

**Commercial, Residential, Recreational, Retail Design Services available to your specific building**



Established in 2005, Gideon Steel Panel Company celebrates being in business for over 15 years!

Thank you Oklahoma for your continued support. We are committed to serving you with high performance steel products and exceeding customer service expectations!

www.GideonSteel.com

**ProBox Portable Storage**

**405-388-9700**

**BUY or RENT 20' and 40' CONTAINERS**

**Sleek Storage - New, Well Maintained Inventory**  
**Super Strong - 16 gauge Corrugated Steel**  
**Seriously Secure - Proprietary Vault Locking System**

**ProBoxPortableStorage.com**  
**YOUR STUFF IS TOO IMPORTANT FOR ANYTHING LESS!**



**PRO BOX PORTABLE STORAGE**

**"Working hard NOW and staying SAFE for a BETTER future for your family."**



**Steel Buildings 580-243-7345**

**Serving this area for more than 20 years!**



**ALL STEEL, ALL WELDED, CONCRETE FLOORS, PRIME 26-GUAGE SHEET METAL**

**MARCH MADNESS with purchase of New Mower\***

**FREE T-SHIRT • FREE CAP • REFERRAL COUPONS • PARTS DISCOUNT**  
**- FINANCING AVAILABLE -**




**Come see us at the Southwest Farm & Home Expo SATURDAY & SUNDAY, APRIL 2-3, 2022**

**DJ'S RENTALS & SALES, INC**  
**580-225-1400 • www.djsrental.com**  
 \*OFFER GOOD THROUGH MARCH 2022

**911 S Main St, Elk City, OK**





# METAL BUILDINGS

**405-377-8763**  
*railroadyard.com*  
*Stillwater, OK.*



*We Deal In Steel*®

**Golf**  
**ATTENTION GOLFERS:** save mileage, money & time, best selection & prices in Western Oklahoma at Elk City Pro-Shop, most major brands, call 580-225-3556, monthly specials. 52/52

**VISIT [www.thepennynews.com](http://www.thepennynews.com) or CALL 580-225-7355 to place your ad in The Penny News today. Deadline each week for classified ads is Mondays 5PM.**

**Want to Buy**  
Used zero-turn mower, any make or model, leave message, 580-339-2781. 1/13



**Looking to Buy: Dozers, wheel loaders, backhoes, skid steers, tractors, forklifts, semi trucks and trailers, old or new, Michael 806-994-0523. 12/23**

**Electric Kiln for pottery, high fire, and accessories, 806-323-2919. 4/15**  
**Wanted: amc project car amx Javelin Rambler rogue sc/rambler 70 rebel or rebel machine, 580-583-4131. 12/18**

**Wanted: 73-78 Chevy or GMC swb big block truck, top dollar paid, will consider project, 580-591-1039. 8/14**

**Coin and currency collections, 580-243-8610. 52/1**

**Top dollar paid for gas station collectibles. Looking for signs, gas pumps, air meters etc. Any type of old sign considered. Call or text 405-808-8948.**



**\$39,550**  
**2017 FORD F150**  
4x4, Crew, Eco-Boost, 1-Owner, 52K Miles, Non-Smoker, Brand New Tires, Mint Condition



**\$11,995**  
**2000 FORD F150 XLT**  
4x2, Ext. Cab, 4-Door, 5.4 V8, Step side, A.R.E. Camper Shell, Low Miles, Local Trade-In, Mint Condition



**\$13,995**  
**2014 DODGE CHARGER SE**  
20" Factory Wheels, Brand New Tires, Locally Owned Trade-in, Super Clean, Rally Package, Must See



**\$19,995**  
**2015 FORD TAURUS SEL**  
53K Miles, Leather, Driver Assist Pkg., Non-Smoker, Both Keys & Books, Local Trade-In

## FINE LINE ROUTE 66 AUTO SALES

**2016 FORD F150 SPORT, Eco-boost, 58K Miles, Brand New 22" Wheels & Tires, Both Keys & Books, Non-Smoker, Like New.....\$24,550**

**4713 W. 3RD, ELK CITY**  
**580-225-9111 or 580-303-8291 Cell**

**WE BUY VEHICLES.**  
**TOP DOLLAR PAID!**



**\$17,995**  
**2013 LINCOLN MKZ**  
3.7 SE, Only 70K Miles, New Michelin Tires, Non-Smoker, Panoramic Sunroof, NAV, Hard Loaded, Mint, Both Keys & Books



**\$15,995**  
**1998 DODGE 1500 RAM SLT**  
4x4, Low Miles, New Tires, Locally Owned Trade-In, Both Keys & Books, All Records, Non-Smoker

**FINANCING AVAILABLE - W.A.C.**



**\$17,995**  
**2011 GMC YUKON SLT**  
4x4, Leather, Sunroof, Rear DVD, 1-Owner, Local Trade-in, Non-Smoker, Both Keys & Books, New Tires, Super Clean



**\$22,550**  
**2004 DODGE 2500 SLT SUPER DUTY**  
Only 140K Miles, 5.9 Cummins Turbo Diesel, 1-Owner, Local Trade, Non-Smoker, Ultra Nice



**\$11,950**  
**2012 HYUNDAI VELOSTER SE**  
3 Door Coupe, Fully Loaded, Non-Smoker, New Tires and Brakes, Complete Suspension Service, Super Clean, Must See



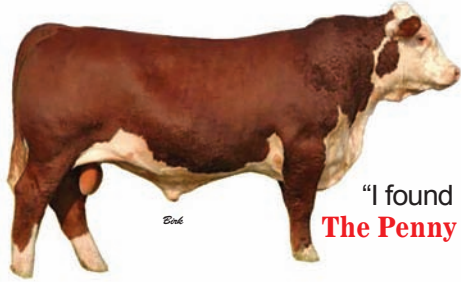
**\$11,950**  
**2011 CADILLAC DTS**  
Luxury, North Star V8, Locally Owned Trade-in, New Tires, Both Keys & Books, Super Nice



# Today in Ag

## JIMMY'S TIP OF THE WEEK

"Make sure you get a soil sample before planting your garden."



"I found it in The Penny News"

[ThePennyNews.com](http://ThePennyNews.com)

### Hunting

For rent: hunting/fishing, vacation cabin, Ft. Cobb lake, right next to water, call/text, 580-243-8697. 24/17

### Horses

Selling horses, goats, misc., consignments welcome, Baker's Auction, Butler, first Saturday of the month, 580-243-7460. 5/13

Horse Buying Station, all weigh, loose, & gentle riding horses, TH Livestock, Ty & Kade Hays, 806-206-5440. 24/29

We buy and sale horses of all classes year round, TH Livestock, Ty and Kade Hays, 806-206-5440. 24/13



### RETIRED RACE HORSE

1/2 Quarter, 1/2 Thoroughbred. Good looking and gentle. 16 Hands Bay horse. Broke and rides.

Good prospect for barrel racing.

Will sell for \$10,000 or trade for used aluminum trailer with living quarters, 3-horse slant or used Power Stroke. CALL 575-749-5400

**KECO 96.5**

LISTEN LIVE

MON-FRI @ NOON!

[kecofm.com/today-in-ag](http://kecofm.com/today-in-ag)

## Today in Ag

with Jimmy Clark



## THE WHEELER GENERAL STORE

HIGHWAY 152 WHEELER, TX 79096  
OFFICE: 806-826-5531 CELL: 806-662-5369

EMAIL: [WHEELERGENERALSTORE@OUTLOOK.COM](mailto:WHEELERGENERALSTORE@OUTLOOK.COM)



Nathan J. Hefley



## Great Plains Bank

Greater. Together.



(888) 449-2265 [www.gpbankok.com](http://www.gpbankok.com)

## HOBART STOCKYARDS



Hwy. 183 North, Hobart, OK  
Office 580-726-3306

WEEKLY CATTLE SALE EVERY WEDNESDAY at 9:30AM

- TAKING CONSIGNMENTS -



Bid in person or online.

Register at [LMAAUCTION.COM](http://LMAAUCTION.COM)

Download the [LMARINGSIDE](http://LMARINGSIDE) App

We receive Cattle all day Mondays & Tuesdays. Cattle will be well fed and watered.

OWNER: REX FLAMING 580-331-8547  
AUCTIONEER: DUSTIN GLOVER

Where we want your business and we do appreciate it!



## National Bank & Trust

We know agriculture!

Elk City, OK • 580-225-2580

Sayre, OK • 580-928-2580

There is a difference.....

[www.fnbec.com](http://www.fnbec.com)

## LIVESTOCK NUTRITION DISTRIBUTOR

(BETTER FEED BETTER RESULTS)  
CATTLE-SHEEP-GOAT-HORSE



## AGRA TECH

Your local one-stop shop for all things cover crops, ag chemicals, and starter fertilizers

405-370-9322 580-225-0317

## Knutson IRRIGATION

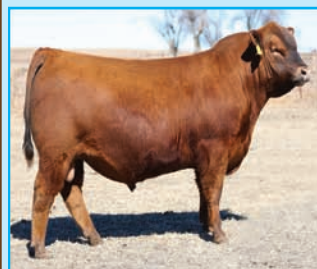
Anything in Irrigation

## Knutson Irrigation Design, LLC

15250 W. Sunshine Road | Yukon, OK 73099

Toll Free: 800-373-9325 | Phone: 405-354-6925

Fax: 405-354-5529 | Cell: 405-830-5296



RED ANGUS

Follow us at: B & L Red Angus

Visit [bredangus.com](http://bredangus.com) for online catalog and videos

Benji & Lori White 580-582-6313 Putnam, Oklahoma

## PROTEIN TUBS

Hi Pro Protein tubs are a free choice supplement designed for beef cattle on forage diets providing less than 8% protein. The low moisture, cooked molasses products are in non-returnable plastic containers or biodegradable tubs that will enhance intake and utilization of available forages, while reducing labor for producers.



Products: Hi-Pro 25% Tub w/ 5% Fat  
Hi-Pro 38% Hi-Energy Tub w/ 12% Fat

Both available in plastic or bio tub.

HI-PRO



## FARMERS UNION CO-OP

720 SOUTH MAIN ST. ELK CITY, OK

580-225-0191

[elkcitycoop.com](http://elkcitycoop.com)

[WWW.EVERETTSWELDING.COM](http://WWW.EVERETTSWELDING.COM)



580-995-4942

US Hwy 34 & 60 • Vici, OK



Micky Lively Greer County

FOR INSURANCE CALL MICKY

CALL ANYTIME! 580-782-3827



## HOBART FARM & GARDEN

QUALITY HI-PRO LIVESTOCK FEEDS

HI-PRO

Bulk Feed Delivery  
Feed Bags • Feed Sacks



580-726-3351 - 1030 S. Monroe, Hobart OK

[www.hobartfarmandgarden.com](http://www.hobartfarmandgarden.com)

HOURS: M-F 8AM-5:30PM • SAT 8AM-NOON



# Today in Ag

## Timely rain may help wheat crop



**Jerry Nine**  
Woodward  
Livestock  
Auction  
Woodward, OK

Our wheat looks sick with lots of brown spots, but some did green up a little with that two-tenths of rain a week ago. Most farmers are saying, "Do you think that it will come back with all those dead looking spots?" But wheat is very hardy or it wouldn't survive in our country anyway.

Luckily, starting this past Monday night our area mostly received an inch of moisture with the exception of Buffalo and they received an inch and a half.

Now I know several of those Buffalo guys and I don't really think they are living better than we are. But whatever the case

I want to publicly thank God for the moisture. Our survival depends a lot on rain as most of us already had a lot invested in this wheat crop. Planting, farming, fertilizing, interest and stress of most wives saying to their husbands—"Why do you farm?"

Never be too proud or forgetful to tell God thank you. My four boys learned very quick that they better learn those words. If I peeled an apple for them or anything they had two seconds as I was handing it to them to say thank you. If they didn't, I wouldn't let them have it. I know one time one of the boys bucked up and wasn't going to say thank you and I said, "I will throw it away if you are too proud to say thank you."

Killing cows and bulls are still bringing a very good price this past week. It's a great time to cull any wild cows or big fleshy ones. If that big fleshy cow has a 300-pound calf you can trade that pair for a nice young one. And there is not many times that you can do that.

Several ranchers have been hurt by gentle bulls. Another friend of mine got his ribs broke trying to load a very gentle bull that turned and nailed him to the fence.

My wife said, "Our neighbors are so much in love. He kisses her, strokes her hair and hugs her. Why don't you do that?" I said, "Because I don't know her that well yet."

I noticed when I was 16 years old the radio was playing my song. Then at 21 years old the bar was playing my song. And now I notice the grocery store is playing my song.

If they closed grocery stores and I have to hunt for food I don't even know here Little Debbie lives."

*Editor's note: Jerry Nine, Woodward, Oklahoma, is a lifetime cattleman who grew up on his family's ranch near Slapout, Oklahoma.*

## ELK CITY LIVESTOCK AUCTION



South Hwy. 6 • Elk City, OK  
I-40 Exit 38  
SALE EVERY FRIDAY • 9AM  
**580-225-6754**

### - CONSIGNMENTS -

April 1: From Altus 25 weaned 5 wt black white face calves, from Foss 8 fancy black angus calves, from Mangum 6 calves and 1 young guaranteed bull, and from Elk City 103 hd of 60-75 day weaned 4-5 wts.

### - MARKET SAMPLES -

MARCH 25, 2022 - Hd Ct. 1230

| STEERS         |                  |                           | HEIFERS    |               |               |
|----------------|------------------|---------------------------|------------|---------------|---------------|
| Mangum         | 6                | 393 \$207.00              | Childress  | 4             | 309 \$184.00  |
| Shamrock       | 22               | 406 \$215.00              | Reed       | 4             | 346 \$192.00  |
| Elk City       | 3                | 410 \$204.00              | Elk City   | 4             | 404 \$176.00  |
| Sweetwater     | 4                | 411 \$209.00              | Altus      | 4             | 454 \$157.00  |
| Sayre          | 5                | 484 \$194.00              | Cheyenne   | 3             | 477 \$151.00  |
| Elk City       | 4                | 505 \$196.00              | Cheyenne   | 15            | 528 \$163.00  |
| Sayre          | 6                | 511 \$184.50              | Sayre      | 14            | 529 \$161.50  |
| Cheyenne       | 7                | 553 \$185.00              | Roosevelt  | 15            | 541 \$156.00  |
| Shamrock       | 23               | 557 \$188.50              | Elk City   | 16            | 614 \$154.00  |
| Altus          | 12               | 560 \$186.00              | Wheeler    | 16            | 637 \$154.50  |
| Altus          | 5                | 636 \$168.00              | Granite    | 3             | 638 \$139.00  |
| Blair          | 5                | 636 \$164.50              | Sayre      | 31            | 660 \$151.25  |
| Carter         | 3                | 753 \$135.00 <sup>2</sup> | Sentinel   | 19            | 858 \$129.25  |
| Sentinel       | 4                | 795 \$151.00              | Sweetwater | 6             | 1036 \$115.50 |
| Butcher Cows:  | \$40.00-\$103.00 |                           | Bred Cows: | \$850-\$1,585 |               |
| Butcher Bulls: | \$48.00-\$132.00 |                           | Pairs:     | \$600-\$1,775 |               |

SALE EVERY FRIDAY - 9AM  
**580-225-6754**

<sup>1</sup>Weaned <sup>2</sup>Cutter Bulls

To consign or for info, call Brandon Hickey, 580-497-6095

## Woodward Livestock Auction Report

THURSDAY, MARCH 24, 2022

Receipts: 2,187 Last Reported: 3,074 Last Year: 2,974

Compared to last week: Feeder steers and heifers mostly steady. Steer calves 8.00 to 12.00 higher. Heifer calves unevenly steady. Demand was moderate. Quality average. Supply included: 100% Feeder Cattle (50% Steers, 48% Heifers, 3% Bulls). Feeder cattle supply over 600 lbs was 69%.

### STEERS Medium and Large 1 (Per Cwt / Actual Wt)

| Head | Wt Range | Avg Wt | Price Range   | Avg Price           |
|------|----------|--------|---------------|---------------------|
| 3    | 361      | 361    | 194.00        | 194.00 <sup>1</sup> |
| 6    | 420-446  | 437    | 223.00-227.00 | 225.72              |
| 7    | 467-471  | 470    | 214.00-225.00 | 221.88              |
| 53   | 508-527  | 518    | 207.00-221.00 | 218.95              |
| 29   | 560-596  | 577    | 191.50-205.00 | 196.56              |
| 172  | 600-642  | 620    | 177.00-196.75 | 191.16              |
| 104  | 655-698  | 667    | 160.00-178.00 | 171.16              |
| 54   | 701-736  | 717    | 156.00-169.50 | 165.90              |
| 216  | 753-793  | 779    | 153.50-158.00 | 155.17              |
| 139  | 808-823  | 810    | 148.00-155.50 | 153.42              |
| 4    | 863      | 863    | 144.00        | 144.00              |
| 47   | 902-907  | 904    | 144.00-146.00 | 144.68              |
| 42   | 1033     | 1033   | 134.00        | 134.00              |

### HEIFERS - Medium and Large 1 (Per Cwt / Actual Wt)

|     |         |      |               |                     |
|-----|---------|------|---------------|---------------------|
| 20  | 297     | 297  | 205.00        | 205.00 <sup>1</sup> |
| 14  | 318-337 | 321  | 176.00-201.00 | 183.83 <sup>1</sup> |
| 5   | 399     | 399  | 193.00        | 193.00              |
| 26  | 362-387 | 366  | 184.50-192.00 | 185.72 <sup>1</sup> |
| 5   | 448     | 448  | 174.00        | 174.00              |
| 32  | 406-436 | 412  | 187.00-199.00 | 193.34 <sup>1</sup> |
| 74  | 485-494 | 487  | 184.50-193.50 | 191.65              |
| 4   | 496     | 496  | 151.00        | 151.00 <sup>1</sup> |
| 3   | 541     | 541  | 164.00        | 164.00              |
| 13  | 511-528 | 520  | 145.00-153.00 | 149.13 <sup>1</sup> |
| 196 | 550-599 | 565  | 158.00-176.00 | 168.59              |
| 9   | 550-579 | 569  | 147.00-148.00 | 147.32 <sup>1</sup> |
| 111 | 605-639 | 629  | 145.00-160.00 | 158.16              |
| 85  | 657-699 | 674  | 136.00-153.00 | 148.08              |
| 4   | 688     | 688  | 135.00        | 135.00 <sup>1</sup> |
| 168 | 718-747 | 735  | 141.00-157.00 | 145.46              |
| 68  | 760-793 | 787  | 136.00-139.00 | 137.73              |
| 11  | 844     | 844  | 138.50        | 138.50              |
| 41  | 858-894 | 883  | 131.00-133.00 | 131.72              |
| 3   | 1050    | 1050 | 114.00        | 114.00              |

<sup>1</sup>Unweaned <sup>2</sup>Thin Fleshed

## Woodward Livestock Auction

900 Lakeview Dr, Woodward, OK | Jerry Nine 800.442.5548

# 4C Livestock Equipment

- MANUAL CHUTES
- PANELS
- WW LIVESTOCK EQUIPMENT

**CHARLES VOGT**  
**580-819-0322**



**Weatherford, OK**  
[www.4clivestockequipment.com](http://www.4clivestockequipment.com)

SALE EVERY MONDAY - 10AM



**WESTERN OKLAHOMA**  
**LIVESTOCK AUCTION**

MARCH 28, 2022 • 1,848 HD

| STEERS      |     |                           | HEIFERS     |    |              |
|-------------|-----|---------------------------|-------------|----|--------------|
| Roosevelt   | 10  | 380 \$226.00 <sup>1</sup> | Canute      | 5  | 398 \$186.00 |
| Clinton     | 4   | 411 \$220.00 <sup>1</sup> | Reydon      | 6  | 478 \$180.00 |
| Elk City    | 7   | 441 \$211.00              | Cordell     | 6  | 525 \$175.00 |
| Cordell     | 6   | 456 \$193.00 <sup>2</sup> | Arapaho     | 9  | 532 \$170.00 |
| Elk City    | 3   | 498 \$194.00              | Watonga     | 39 | 575 \$170.75 |
| Sayre       | 10  | 505 \$207.00 <sup>1</sup> | Thomas      | 3  | 575 \$158.00 |
| Cheyenne    | 8   | 553 \$176.00 <sup>2</sup> | Durham      | 12 | 579 \$159.50 |
| Butler      | 5   | 573 \$187.00              | Woodward    | 75 | 596 \$159.25 |
| Lookeba     | 9   | 600 \$180.00              | Elk City    | 8  | 606 \$155.00 |
| Lookeba     | 26  | 677 \$177.00              | Dill City   | 6  | 633 \$157.00 |
| Cordell     | 324 | 678 \$172.85              | Sayre       | 23 | 666 \$148.00 |
| Cordell     | 7   | 680 \$165.00              | Granite     | 4  | 706 \$141.00 |
| Cheyenne    | 31  | 730 \$160.50              | Clinton     | 23 | 713 \$149.75 |
| Clarendon   | 47  | 752 \$160.00              | Sayre       | 73 | 719 \$148.75 |
| Carnegie    | 42  | 752 \$159.50              | Weatherford | 3  | 752 \$140.00 |
| Weatherford | 9   | 914 \$145.50              | Cordell     | 8  | 790 \$138.50 |
| Sayre       | 15  | 1011 \$139.00             | Erick       | 15 | 820 \$140.00 |

**BUTCHER COWS - \$23.00-\$99.50**  
**BUTCHER BULLS - \$85.00-\$124.00**  
**BRED COWS - \$1025-\$1425**  
**PAIRS - \$1625-\$1675**

<sup>1</sup>Weaned <sup>2</sup>Cutter Bulls <sup>3</sup>Xbred <sup>4</sup>Calves

[WWW.WESTOKLIVESTOCKAUCTION.COM](http://WWW.WESTOKLIVESTOCKAUCTION.COM)  
23031 N FRONTAGE RD CLINTON, OK • I-40 EXIT 71  
**BRANDON HICKEY 580-497-6095**





# TRADIO



Tradio can be heard every Monday through Friday from 10am – 11am on KECO 96.5FM.

Callers can call or text 580-225-9697 to buy, sell, or trade during that time. Only calls are published here. These calls are from 3/23-3/29.

### WEDNESDAY

LOOKING FOR: Frank Lugart token native american artificats 1964 before coins artm ar10 rifles, selling cracked pecans 2lb, 580-799-5928.

LOOKING FOR: red bone hound, gas stoves and driers for sale, 580-309-2307.

FOR SALE: 22in flat screen tv \$35, drummel tool \$35 and toy tractor, 580-886-4020.

FOR SALE: parker and hale rifle \$1,200 text, 580-497-7067.

LOOKING FOR: 12 metal fence posts, 580-445-1203.

FOR SALE: 40 gal water heaters one leaks other is like new 100 for both, carpet tiles 12x12 office \$100, looking for front end parts 1992 F150, 580-301-0789 Blair, OK

FOR SALE: dairy herd and boars and bottle babies lemanche and nubian, boar nubian registered, trash trailer, 580-706-9704.

FOR SALE: masonry and mortar, 5 80lb bags, 580-243-9536.

FOR SALE: gale 135 1000rpm hay girnder 1,000 hydraulic 580-500-7228.

FOR SALE: 98 model Chevy 4x4 single cab \$9,000, 405-542-7121.

FOR SALE: semi angus bulls dozen of them, full set car tires good tread \$100, 2 yearl 90ls 2,000 7/8 angus hemi, 580-497-6703.

SERVICE: cleaning houses, for sale clothes, shoes, msc, 580-799-0864.

FOR SALE: 98 Chevy pickup 4x4 20in custom tires selling for parts, Pair of peacocks \$300, 580-254-0795.

LOOKING FOR: rubber foam twin bed mattress. 580-928-7469.

LOOKING FOR: rollaway bed, text only 580-821-1146.

### THURSDAY

LOOKING FOR: 2 bedroom house to rent around Elk City, FOR SALE: 3 bed 2 bath double-wide trailer, asking \$5k, fridges and window unit AC's, 2 bed 1 bath home on 2 lots in Watonga, 405-856-4182 (Watonga Cheese Man)

FOR SALE: green or seasoned firewood, SERVICE: tree trimming, FOR SALE or TRADE: Baldwin piano, asking \$575 obo, 580-660-0402 (Wood Cuttin' Keith)

FOR SALE: kids DVD's, cartoons/movies, best offer, around 20 total, flat screen TV stand with 2 glass shelves, best offer, old tin and uno deck, (Star Trek special edition, original pkg) best offer, 580-340-5986 (Tradio Mystery Man)

TRADE: 4-10 shotgun, (trade for cheap pistol), 580-210-1406.

FOR SALE: bunny rabbits, different varieties, asking \$10 each, in Lone Wolf 580-481-4757 ask for Joe

FREE: 30 gallon curved fish tank with matching stand, glass shelves, all the extras you need, in Leedey 580-821-0039.

FOR SALE: Winchester pump 12 gauge, never fired, asking \$400, call 580-383-1003.

FOR SALE: 2017 Nissan Rogue, heated seats, treadmill, scanner/copier, call 580-318-1512.

FOR SALE: 2 rototillers, front and rear tine, 220 air compressor, 580-339-6531.

LOOKING FOR: a 454 or 350 chevy motor with 400 turbo transmission, (needs complete motor), 405-833-6493 in Clinton.

FOR SALE: 25-30 wooden crates/pallets, call 580-706-1432.

FREE: 7 month old black and white blue heeler terrier dog, needs room to run, call 580-374-5848.

FOR SALE: 2001 new vision 5th wheel camper, 31", good tires, new fridge, new insulation, asking \$12k obo, 99 model dually, dodge, 24v cummins, automatic, needs a little front end work, has parts to go with it, asking \$6,500 as is, Looking for a small creep feeder, 580-679-4619.

FOR SALE: set of Goodyear wrangler tires, 265/70 r 18's, 95% tread, asking \$800, 12' folding ladder, asking \$200, 405-668-0543 in Elk City.

LOOKING FOR: a livestock guarddog puppy, 580-318-3511.

FOR SALE: 10,12,14,22" metal studs, brand new in bundles, 2 bundles 8 inch track, brand new, text only 580-330-0252.

FOR SALE: first calf heifer pairs, (commercial angus based, bulls bred to registered angus), 580-585-1395 in Roosevelt.

### FRIDAY

LOOKING FOR: 317 N. Jefferson in Elk City, white male chihuahua, offering REWARD if found, 405-856-4182 (Watonga Cheese Man)

LOOKING FOR: a vehicle around \$2000, prefer 4x4 but not too picky, 580-340-5986 (Tradio Mystery Man)

FOR SALE: 2007 low v bottom 12' boat, 3.5 horse 2 stroke motor, very good condition, tags are current, call 580-374-2164 or 580-374-2176.

FOR SALE: 2021 Ford F250 4x4, 12.5k miles, leveling kit and many extra, for more info call 580-774-9706 or 580-821-1641.

FOR SALE: '99 Ford Taurus, cracked head, asking \$250 as is, 580-878-0694.

LOOKING FOR: crochet thread, in Sayre, deliver please to apartments in Sayre, 580-799-7666.

FOR SALE: Kenmore 18k btu window unit AC, asking \$250, very good condition, paint, loading ramps, propane dryer \$100, in Rocky 580-530-2168.

FOR SALE: rollaway bed, 2 oval end tables, (marble top), kitchen table and 4 chairs, call 580-530-2933.

FOR SALE: 2007 Skeeter SR180 dual console bass boat, tagged thru 2024, very clean, 115 Yamaha motor, Lowrance elite depth finder, MANY extras, (everything works except speedometer) asking \$21k, call 580-799-8122.

FOR SALE: masonry mortar left over, (5) 80lb bags of pre-blended, 1 bag of stone veneer, 580-243-9536.

FOR SALE: hand picked organic pecans, \$4/ gal, wooden rocker, asking \$65, 580-613-0108.

FOR SALE: 18.5' Ranger bass boat, late 80's model, title for motor, boat has 175 hp yamaha, runs very well, livewell, asking \$6500 obo, in Thomas OK, '93 Mercedes 190E, not running currently, has many extra parts, asking \$800, 580-661-1595 (Thunder From Down Under)

### MONDAY

FOR SALE: Milwaukee cordless tools with batteries, charger, 2 boxes of bits and carrying bag, (best offer), ipad pro with case, like new, small DVD player, Looking for some folding tables, 6'-8", 580-340-5986 (Tradio Mystery Man)

FOR SALE: Lugart gun w/ case, 580-799-7373.

WANTED: Needs house painted, 580-695-2748.

FOR SALE: set of hoosier drag slicks (29" tall, 11.5" wide on 15" rim) asking \$500, set of 5 Nitto terragrappers, (18" wheels, tires 31.5" tall) asking \$200 for all 5, 2 tires off Cadillac Escalade, (20" rim) asking \$100 for both, 580-660-1186.

FOR SALE: 10' bass buggy, numbers, asking \$450, 2 Johnson boat motors, need tuned, asking \$150, 580-302-2146.

FOR SALE: 2 folding tables, 220 air compressor, 580-339-6531.

FREE: 37" RCA color TV, 580-309-2448.

FOR SALE: oxy/acetyline bottles, pickup bed full of different sized marble, 2009 Ford Flex, white leather interior, good tires, clear title, asking \$400, (needs some work), call or text 580-497-6760.

FOR SALE: 2021 F250, 4x4, 12,500 miles, leveling kit, many extras, call 580-774-9706 or 580-821-1641.

FOR SALE: 25 plus 5 flatbed gooseneck trailer, all chains and boomers you need, asking \$7,500 for all, 2500 grain bin, asking \$2,500, 580-821-1873.

LOOKING FOR: rollaway bed, text 580-821-1146.

FOR SALE: Smith and Wesson model 14-3, 38 special, 8" barrel, very clean, no wear, asking \$700, 580-530-1113.

FOR SALE: donkeys, smaller trampoline with net, call 580-782-3517.

FOR SALE: 4 person paddling boat, grill guard, asking \$200, 580-374-5634.

FOR SALE: (1) 2 year old angus, asking \$2000, dozen semi angus bulls, set of 225 55 16" car tires, Michellin, good tread, asking \$100 for the set, 580-497-6703.

FOR SALE: fishing poles different sizes, SERVICE: lawn/tree/garden work, 580-275-8915 in Clinton.

LOOKING FOR: 16' gooseneck trailer, 806-216-2760.

LOOKING FOR: a gun course suitable for an older lady to take, 580-210-0510.

### TUESDAY

FOR SALE: DR trimmer/mower, ladies leather sandals, size 6.5/7, call 575-447-8777.

FOR SALE: 2000 GMC z71 pickup, asking \$4,000, call 580-729-2419.

FOR SALE: small utility trailer, 4'x7', asking \$200, Durango boots, size 13 extra wide, asking \$40, 2 pair of justin lace-up boots, \$25 each, FREE: washer and dryer (thinks they work, would deliver in Elk City), 580-374-1142.

FOR SALE: bulls, 405-747-8734.

FOR SALE: 2003 ext cab Ford pickup, '73 Ford Bronco, 806-663-3744.

LOOKING FOR: 11 L 15 implement tires in good shape, FOR SALE: 300' of 2" steel cable, 3 bottom plow, 580-530-0207.

LOOKING FOR: 600-800 bushel grain cart, 580-530-0595.

FOR SALE: small captains desk, bunnies, misc. baby stuff, call 580-515-0434.

FOR SALE: 1969 Camaro Z28 clone, orange and white stripes, black interior, is a roller project, asking \$31k, in Clinton, 405-833-6493.

FOR SALE: 150 or so DVD's, new batch from this caller, 1500 watt generator, runs and works on first pull, best offer. Looking for some folding tables, (6'-8' in size). Looking for a cheaper running vehicle, (something under \$2k), 580-340-5986 (Tradio Mystery Man)

LOOKING FOR: 9mm or .40 cal gun, Looking for portable basketball goal, Looking for t6 or 7 Canon camera, 301-3873.

FOR SALE: washer and dryer set, dryer needs belt back on it, \$75 obo for the set, Weatherguard diamond plate tool box asking \$250, Looking for old farm equipment, old cars and plow to haul away, anyone needs a farm cleanup, call or text 580-216-1786.

FOR SALE: rear tine and front tine rototiller, air compressor, call 580-339-6531.

FOR SALE: 6 lug universal chrome rims, weed eaters, set of barstools, 405-655-2421 or 580-500-8793.

2006 F150 King Ranch, 319k miles, very well kept, daily driver, 4x4, asking \$7,000 obo, in Shamrock 806-486-7444.

LOOKING FOR: pickup, Chevy or GMC, maybe for parts or repair, also tahoe and yukon of same year 2000-2001, half or 3/4. 580-704-0093.

FOR SALE: John deere 4230 tractor with self leveling loader, high performance over-haul, air conditioning, asking \$25k, 580-816-0371.

LOOKING FOR: self propelled cub cadet lawn mower, needing for parts, 580-660-1222.

FOR SALE: 1975 John Deere 2030 65 hp tractor, runs good, everything works, good paint, 2200 hrs, 580-497-6623.

### Phone Prefixes 580 Area Code

|          |              |          |             |
|----------|--------------|----------|-------------|
| 225..... | Elk City     | 623..... | Watonga     |
| 227..... | Fairview     | 625..... | Beaver      |
| 240..... | Elk City     | 633..... | Eldorado    |
| 243..... | Elk City     | 637..... | Alfalfa     |
| 246..... | Indiahoma    | 643..... | Fort Cobb   |
| 254..... | Woodward     | 639..... | Roosevelt   |
| 256..... | Woodward     | 648..... | Olustee     |
| 259..... | Forga        | 654..... | Carnegie    |
| 266..... | Martha       | 655..... | Reydon      |
| 274..... | Longdale     | 661..... | Thomas      |
| 287..... | Willow       | 664..... | Butler      |
| 305..... | Frederick    | 666..... | Rocky       |
| 312..... | Fairview     | 667..... | Tipton      |
| 321..... | Clinton      | 674..... | Dill City   |
| 323..... | Clinton      | 675..... | Vinson      |
| 328..... | Taloga       | 676..... | Gould       |
| 331..... | Clinton      | 679..... | Duke        |
| 334..... | Woodward     | 683..... | Reed        |
| 335..... | Frederick    | 687..... | Elmer       |
| 337..... | Bessie       | 688..... | Hollis      |
| 343..... | Corn         | 697..... | Quinlin     |
| 347..... | Mtn View     | 726..... | WeatherFord |
| 393..... | Sentinel     | 735..... | Buffalo     |
| 397..... | Manitou      | 764..... | Chester     |
| 419..... | WeatherFord  | 766..... | Ft. Supply  |
| 429..... | Cache        | 772..... | WeatherFord |
| 438..... | Cleo Springs | 774..... | WeatherFord |
| 445..... | Clinton      | 782..... | Mangum      |
| 472..... | Canute       | 816..... | WeatherFord |
| 473..... | Hammon       | 819..... | WeatherFord |
| 477..... | Altus        | 821..... | Elk City    |
| 479..... | Grandfield   | 822..... | Okeene      |
| 482..... | Altus        | 824..... | Waynoka     |
| 486..... | Cartter      | 832..... | Cordell     |
| 488..... | Leedey       | 846..... | Lone Wolf   |
| 497..... | Cheyenne     | 866..... | Sharon      |
| 515..... | Clinton      | 883..... | Ringwood    |
| 517..... | Clinton      | 885..... | Arnett      |
| 518..... | Clinton      | 886..... | Canton      |
| 519..... | Clinton      | 887..... | Fay         |
| 526..... | Erick        | 891..... | Oakwood     |
| 534..... | Sweetwater   | 921..... | Laverne     |
| 535..... | Granite      | 922..... | Seiling     |
| 538..... | Gotebo       | 923..... | Gage        |
| 562..... | Burns Flat   | 928..... | Camargo     |
| 563..... | Blair        | 926..... | Sayre       |
| 568..... | Davidson     | 938..... | Shattuck    |
| 569..... | Snyder       | 939..... | Harmon      |
| 582..... | Putnam       | 977..... | Fairview    |
| 592..... | Foss         | 983..... | Roger Mills |
| 593..... | Custer City  | 989..... | Mutual      |
| 597..... | Chattanooga  | 992..... | Perryton    |
| 614..... | Watonga      | 994..... | Mooreland   |
| 621..... | Freedom      | 995..... | Vici        |

### 405 Area Code

|          |           |          |           |
|----------|-----------|----------|-----------|
| 247..... | Anadarko  | 663..... | Hydro     |
| 352..... | Minco     | 797..... | Eakly     |
| 457..... | Lookoba   | 884..... | Geary     |
| 542..... | Hinton    | 929..... | Colony    |
| 643..... | Fort Cobb | 966..... | Gracemont |
| 656..... | Binger    |          |           |

### 806 Area Code

|          |          |          |         |
|----------|----------|----------|---------|
| 256..... | Shamrock | 826..... | Wheeler |
| 323..... | Canadian | 852..... | Higgins |
| 375..... | Allison  |          |         |
| 779..... | McLain   |          |         |


### 940 Area Code

|          |         |          |        |
|----------|---------|----------|--------|
| 495..... | Electra | 553..... | Vernon |
| 552..... | Vernon  |          |        |







**Listen to the Ag Weather Forecast at 12:20PM**  
**Mon.-Fri. on KECO 96.5FM**



**KECO 96.5**

**LOCAL 7-DAY WEATHER FORECAST**

| THURSDAY   | FRIDAY   | SATURDAY  | SUNDAY  | MONDAY  | TUESDAY  | WEDNESDAY  |
|--|--|---|---|---|--|--|
| <br>Sunny<br>Hi 60<br>Lo 38 | <br>30% Precip<br>Hi 65<br>Lo 40 | <br>Mostly Sunny<br>Hi 68<br>Lo 44 | <br>Mostly Sunny<br>Hi 78<br>Lo 51 | <br>30% Precip<br>Hi 75<br>Lo 47 | <br>Partly Cloudy<br>Hi 66<br>Lo 43 | <br>Partly Cloudy<br>Hi 70<br>Lo 42 |

**SKUNK WERX FULL-SERVICE PAINT & BODY SHOP**



580-928-5005  
201 West Kenemer Sayre OK

Collision Repair. All Makes & Models.  
 All Insurance Providers & Fleet Services  
 Windshield Replacement. Hail Damage.  
 Computer Color Matching.  
 Custom Paint For Your Vehicle or Motorcycle.  
 We Paint Motorcycle Parts! FREE ESTIMATES!

**Horses**

Selling horses, goats, misc., consignments welcome, Baker's Auction, Butler, first Saturday of the month, 580-243-7460. 5/13

Horse Buying Station, all weigh, loose, & gentle riding horses, TH Livestock, Ty & Kade Hays, 806-206-5440. 24/29

We buy and sale horses of all classes year round, TH Livestock, Ty and Kade Hays, 806-206-5440. 24/13

**Music**

Guitar lessons, all ages, all levels, drums, bass, etc, if ad is mentioned you will receive a 10% discount for first month, Wilson Music, 580-379-3288, 580-331-7368. 4/13

**Auctions**

Check out XIT Auction calendar in this week's publication! 4/16

**Lan/mic AUCTION & REAL ESTATE TRAILER SALES**



Factory Authorized Dealer Gesseneck TRAILER MFG. CO., INC.

"Call us for all your auction, real estate & trailer needs."

Lana Black  
580-515-6323  
Chris - 580-660-0053  
Greg - 405-368-8949

"Serving Western Oklahoma Since 1985."

**BARNES FEED SERVICE**  
726-2120  
HOBART, OKLA.

ALL OUR FEEDS INCLUDE THE BEST VITAMIN/MINERAL PRE-MIX AVAILABLE

**CREEP • GROWER STARTER • SHOW**



2 ton HEAVYBILT Feed Buggy

Home of the Black Trip Hopper Feeders



Call for Special Pricing! 580-726-2120

**We Carry the Fence Supplies you need!**



Gates • T-Posts • Cement • H-Braces  
 Corner Posts • Continuous Fence

**EVERETT'S WELDING & REPAIR, INC.**

580-995-4942 • US Hwy 34 & 60 • Vici, OK  
[www.EVERETTSWELDING.COM](http://www.EVERETTSWELDING.COM)

**RETIRED RACE HORSE**  
 ½ Quarter, ½ Thoroughbred.  
 Good looking and gentle.  
 16 Hands Bay horse.  
 Broke and rides.  
 Good prospect for barrel racing.  
 Will sell for \$10,000 or trade for used aluminum trailer with living quarters, 3-horse slant or used Power Stroke.  
 CALL 575-749-5400



**NM CUSTOM FENCING & WELDING**

\$600 LABOR PER 1/4 MILE

Barbed Wire • Pipe Fence  
 Cattle Pens • Setting/Welding Corners  
 - Family Owned & Operated -

**Nick Mackenna 580-210-6101**

NW Oklahoma's Premier Pleasure Ride  
**COME CELEBRATE OUR 40th RIDE!**

**40TH ROMAN NOSE HILLS TRAIL RIDE**  
 WATONGA KIWANIS  
**April 22nd - 24th**

Best View in NW Oklahoma!

Campground at Wolfe Ranch overlooking Roman Nose State Park, Watonga, OK

- Guided Trail Rides (Friday - Sunday) • \$75/Rider, \$50/12 and Under (Please Pre-Register/Pay at Gate)
- 7 Hot Meals Included for Paid Riders • New Trails Overlooking Roman Nose Park & Lakes
- Entertainment / Auction • No Credit Cards Accepted • Call if More Than 4 in Party

You must provide your own horse with current negative Coggins.

Free Raffle giveaways to paid riders

Call in registration encouraged, Contact Jeff Fritz at 580-830-0235 or Alane Buseman 405-834-9616

[www.RomanNoseHillsTrailRide.com](http://www.RomanNoseHillsTrailRide.com) Benefits to: Watonga Kiwanis

**"YOUR TOTAL SOLUTION PROVIDER FOR NEW & USED CONSTRUCTION EQUIPMENT"**

**OCT EQUIPMENT**

HOURS:  
 M-F 8AM-5PM  
 Sat. 8AM-Noon

**CASE CONSTRUCTION**

**FULL SERVICE & PARTS**

|  |   |   |
|--|---|---|
| <b>CLINTON, OK</b><br>1512 Neptune Dr.<br>800-896-9378<br>580-323-3422 | <b>OKLAHOMA CITY, OK</b><br>7100 SW Third<br>800-375-2273<br>405-789-6812 | <b>TULSA, OK</b><br>12210 E First<br>800-375-1628<br>918-437-5085 |
|--|---|---|

**SHEEP & GOAT AUCTION**

TAKING CONSIGNMENTS FOR NEXT SALE  
**SATURDAY, APRIL 2ND • 11AM**



Call in consignments before Noon on Friday. First to call, first to sell. Will consign all day.

Start receiving Friday from Noon-7pm then Saturday at 7:30 am. Sale starts at 11AM.

Concessions Available!

- Bid in person or online
- Register at LMAAUCTION.COM
- Download the LMARINGSIDE App

**HOBART STOCKYARDS**  
 Hwy. 183 North, Hobart, OK  
 Locally Owned - Office 580-726-3306

|  |                             |                                      |
|--|-----------------------------|--------------------------------------|
| Sheep/Goat Sales Mgr.<br>Kent McCorkle<br>580-956-4788 | Auctioneer<br>Dustin Glover | Owner<br>Rex Flaming<br>580-331-8547 |
|--|-----------------------------|--------------------------------------|

Where we want your business and we do appreciate it!

**SPECIAL PRICING on new equipment in inventory**



**WE RENT EQUIPMENT**



2013 Hitachi ZX 225



2020 Case CX60C

View Our Equipment Online [www.octequipment.com](http://www.octequipment.com)



## SOCIAL SECURITY DISABILITY BENEFITS

REPRESENTATION  
AT ALL LEVELS FOR CHILDREN & ADULTS

### OWEN/PARVIN & ASSOCIATES, INC

## 580-237-3705

NO RECOVERY • NO FEES

www.owenparvin.com



**MORE OPTIONS  
MORE DISCOUNTS**

- Automobile insurance
- Home insurance
- Life insurance

**Misty Gossen**  
Your Local Agent

2004 W Gary BLVD. CLINTON OK 73601  
MGOSSEN@FARMERSAGENT.COM  
https://agents.farmers.com/mgossen

**Call 580-323-8444 today!**

Let me help you get the most value out of your insurance coverage.



### Trailers

16ft car hauling trailer, good shape, new tires, 580-774-8445. 4/16

1986 39' Mate end dump rock trailer, good shape, \$15,500, 405-313-1671. 4/16

6x24 gooseneck cattle trailer, solid sides, rubber floors, torsion axles, good, 580-821-6739. 4/13

### EZ HAUL IN LINE ROUND BALE TRAILERS

Price Before You Buy Delivery Options Available

**Many Sizes In Stock!**

## BALE BUGGY

Mike Nemeč  
580-336-7894  
Grady Parmley  
580-336-7004



### Real Estate

**Restaurant in lake town** for sale (Canton, OK). \$125,000 OBO Established in 2014, still open and operating you can buy it today and start making money, owner has teenager that is involved in several activities and would like to sale to have more time to be home and at his events, comes with building and everything inside, all offers will be considered, call Nicole 580-886-4642. 4/16

**2 bedroom 1-1/2 bath** house and 7 acres for sale, Mayfield area, call 580-534-2122. 2/14



### Boats

2016 17ft tracker pro guide, v-175, deep-v aluminum mercury 115, 4stroke, 55lb thrust trolling motor, in new condition, motor has approx 20hrs \$21,500, 580-515-9048. 4/15

### Farms

150 acres N.E. of Buffalo, OK, in CRP, located by paved rd. rural water, electricity, phone line, annual CRP payment, deer, quail, some farmland, 580-727-5525. 4/14

### Oil/Minerals

**BUYING MINERAL RIGHTS**, Producing-Non Producing, 920-903-9611 or 405-535-7957, email: bobfleshman.bf@gmail.com. 12/24

### HARBOR ENERGY

Do you have mineral rights that you would like to lease or sell? Call us today!  
**405-217-2715**



**AFS CONNECT**

## EVERY FIELD IS YOUR FIELD.

**CASE IH**  
AGRICULTURE

## ROTHER BROS., INC

HWY 183 NORTH, CLINTON, OK • 580-323-1981 • WWW.ROTHERBROS.COM

# SOD BY SHERRY

*Your Total Quality Oklahoma Sod Source for 39 Years and Rolling!*

**Astro Bermuda Grass \$260**

**TAHOMA 31' \$360**  
BERMUDAGRASS

**Justice Fescue \$420**

Coverage: 500 sq. ft. per pallet

Order Online Installation Available

[www.sodbysherry.com](http://www.sodbysherry.com)

## 405-354-7926

**Country Living!** This spacious 3 bed/2 bath home sits on 1.2 acres at 12636 N. 1980 Rd. Carter, OK. This home features an open concept, many upgrades, and a unique upper and lower deck. Not to mention there is a 20x20 shop as well as a 30x50 shop! Call today for your private showing. Jamie Swartwood, RE/MAX All American Realty, 580-504-9298 - leave voicemail if not able to answer. 4/15

**Beautiful 20 Acre Farm** with a 3bed 2 bath modular home in Crescent, OK, 30 X 50 horse barn, storm shelter, No HOA, Call Roma 405-788-1060 4/13

### Welding



**DAY WELDING LLC**  
580.309.1041

Day Welding, LLC, Pipe fences, lots, carpports, sheds, and more! Facebook: @DayWeldingOK, Kenny Day 580-309-1041.. 8/13

## SUPERIOR Grain Equipment

**COMPLETE GRAIN STORAGE SOLUTIONS**



**SAVE NOW with WINTER DISCOUNTS**

## W WALL BIN HOPPERS

YOUR LOCAL AUTHORIZED SUPERIOR DEALER

**10 MILES SOUTH OF WEATHERFORD ON HWY 54**

**Pete: 580.819.2448**

 Like us on facebook®

ALL KINDS OF ROOFING • SHINGLES • ASPHALT • METAL ROOFING



INSURED • SERVING WESTERN OKLAHOMA FOR 30+ YEARS

"My wife and I were amazed at the workmanship, detail and cleanup that Doug's crew displayed while re-roofing our home. We highly recommend Modern Construction!"  
-- Radio Personality Shawn Wilson

# MODERN CONSTRUCTION ROOFING

580-225-6812 Elk City, Oklahoma  
OKREG 80000878

## M&D ENTERPRISES & LAWNMOWER SHOPS

580-886-2345  
Canton - Seiling - Weatherford  
Woodward\* (\*2 locations in Woodward)



Scan me!



Buy with confidence!  
Full line dealer offering the best in parts, service and repair with highly trained, certified mechanics.

Chainsaws, Trimmers, Blowers, Edgers, Hedge Trimmers, Power Washers & Generators.





**U-HAUL AUTHORIZED DEALER**

**OutBuildingsOK.com**  
**MowersOK.com**

Gas Grills & Patio Furniture  
Storm Shelters & Saferooms  
Portable Buildings, Insulated Well Houses & Sheds, Carpports & Garages  
Greenhouses  
Chicken Coops  
Hunting Blinds  
Traeger & Green Mountain Pellet Grills, Pellets & Accessories  
Boss Buck Feeders






## Understanding What We Read

FOR STUDENTS OF THE BIBLE


ANTICHRIST/One World Leader: Some are preaching that the word "antichrist" refers to a specific person that will appear near the end of the world deceiving people. To be "anti" is to be against or contrast to someone or something. To teach something contrary to the teachings of Christ should be considered "anti." Is there going to be a one world ruler before the second coming of Christ? Not according to the prophecy of Daniel: "...but they shall not cleave one to another, even as iron is not mixed with clay. And in the days of these kings (notice plural) shall God of heaven set up a kingdom which shall never be destroyed...but it shall break in pieces and consume all these kingdoms (notice plural)... (Daniel 2)." A careful reading of the scripture reveals the antichrist teachers to beware of: "For many deceivers are entered into the world, who confess (or acknowledge) not that Jesus Christ is come in the flesh. This is a deceiver and an antichrist" (2 John 1:7). A careful understanding of the word "flesh" is needed. It is translated from the Greek word "sarx" which means "human nature" or "human being." Jesus was born just like you and me... 100% human being. Remember "No man hath seen God". How many men saw Jesus? "...and as ye have heard that antichrist shall come, even now are there many antichrists (plural)..." (1st John 2:18). No need looking for the antichrists to come for they have been around a long time. Deception is what got man in trouble from the beginning. So how do we keep from being deceived? "Beloved, believe not every spirit (or teaching), but try (test) the spirits...because many false prophets are gone out into the world" (1st John 4:1). Jesus warns us: "Take heed that no man deceive you" (Matt 24:4). There will be a new world order when God is ready to send his son, Jesus, back to establish a new kingdom here on earth that will last forever (Ps 145:13). Wouldn't it be nice to be part of the little flock that will inherit eternal life in this new kingdom (Luke 12:32)? King David knew about this new kingdom that was going to be established in the future on a renewed earth (Psalms 37). Read what it will be like: Isaiah 65:17-25.

Steve Ryan • 2nd Advent Christian Church  
b.ryan1@juno.com • www.secondadventchristianchurch.com

### Help Wanted



**Looking for full time dependable individuals for a fast pace detail operation., experience a plus but not required, pay based on experience, apply in person at 405 E 3 rd st Elk City. 2/14**



### Great Plains Kubota

**Great Plains Kubota in Cordell is seeking an experienced mechanic. Must have diesel and gas engine, hydraulic, electrical and A/C experience, very competitive pay and benefit package, for more information contact HR Director at 405-567-9413 leave message if no answer. 4/16**

**Job opportunity available at Peck Services LLC, must have a valid drivers license and can pass a drug test, welding experience preferred but not required, please contact Jake or Crystal Peck, 580-243-8605 or 580-660-5834. 4/14**

**Farm mechanic needed, salary varies with experience, 580-682-0777, Hobart, OK. 4/16**

**Town of Vici Nursing Home is currently accepting applications for LPN and RN Positions and for an Office Assistant Position, we offer benefits, flexibility in scheduling, and a team approach to care, call 580-995-4216 to discuss the possibilities. 4/13**

**Class A CDL , 6 months experiences, good job with great benefits, text name and number and we will contact you. 580-318-1512. 4/15**

**Testco, Inc in Watonga is seeking crew members to rig up/down flowback oilfield equipment, CDL preferred, pay based on experience, 580-623-4900. 4/13**

### Tom's Services

Taking applications for fencing laborers. Must be reliable and have transportation to work. Must be able to travel and stay away from home during the week. Pay is determined on amount of experience. Apply in person at 19642 RT 66 Elk City OK For more information 580-309-0204 or 580-821-1830

### Hay/Feed

**Large rounds Alfalfa, \$110, , Large rounds Bermuda \$120, Candadian, TX, 806-323-3303. 4/16**

**Net wrapped Crabgrass hay and beardless wheat, 4x6 bales, North of Weatherford, call 580-445-8163. 4/15**

**Hay For Sale: Love grass, 4x5 round bales, good clean hay. 2021 season, \$45 per bale, Can load, located NW of Vici. Call 580-799-2596. If no answer leave message. 4/14**

**Hay for sale - round bales wheat hay, Okarche, 405-203-6829. 4/14**

**For Sale: Large round bales of rye straw. Tim 580-515-9894. 24/34**

**Alfalfa small square bales, \$7/bale, 580-301-0682. 4/13**

**Large round bales of Crab grass and Wheat straw, King Farms, 405-545-0690. 4/13**

**Alfalfa hay for sale, small square bales, south of Enid, 580-862-7780. 4/13**

**Two Bar W Farms, Custom Swathing and Baling, For Sale: Small squares Alfalfa or Bermuda in 21 bale bundles, Kelly 580-819-0664 Jason 580-819-3855. 24/30**

**Midland 99 grass sprigging \$140/acre, total cost fsa will pay \$130/acre if you qualify, we start planting March 1, sprigs only \$2/bushel O.S.U. measurements, Randy Henson 806-669-8516, Tom Christner 316-617-4437, Wheeler, Tx. 20/17**

**Hay for sale: Bermuda grass round bales, Blue stem, & Alfalfa in round bales , Oats, Millet and Wheat hay round bales, Ted Thimling, 580-885-7278 or 580-254-1705. 52/44**

**Irrigated Midland 99 Bermuda grass, excellent horse quality, small square bales in 21 bale bundles, stored on pallets in the barn, weed-free, sticker-free, put upright, \$11.42/bale, 21 bale minimum, 5x6 round bales, same hay, \$130 each, Yukon, Ok 405-630-8710. 24/05**

**Color Ads Every Week \$25 each 580-225-SELL (7355) or 1-800-675-1416**



## BULLSEYE PEST & TERMITE SERVICE

(580) 225-7327 • 800-427-3439  
"We Kill What Bugs You"

Join us for the **German Feast and Auction**  
**APRIL 9, 2022**

FEAST & AUCTION SCHEDULE:  
10 AM - Silent Auction/Baked Goods Sale Begins  
11:30 AM - 1:30 PM - Lunch Served  
1 PM - Live Auction Begins  
5 - 7 PM - Supper Served



Don't miss the last German Feast & Auction to be held in Corn!

GERMAN SAUSAGE • VERENIKA • SAUERKRAUT • ZWIEBACK • AND MORE

**WWW.CORNBIBLE.ORG**  
INFO@CORNBIBLE.ORG • 208 N REIMER ST • CORN, OK • 580-343-2262

## POP & SONS INSULATION

WEATHERFORD, OKLAHOMA

- NEW OR EXISTING •
- RESIDENTIAL OR COMMERCIAL •
- FREE ESTIMATES • FULLY INSURED •
- Batts • Netting Spray in Walls • Blow in Attic • Fireplaces

**Polyeurofoam for Metal Buildings**

Serving Oklahoma for over 40 Years  
**1-866-327-0958**  
**580-774-5230 • 580-254-8393**

## MCKINSEY MOTORS



Clinton, OK • 580-323-0258 • 800-725-0258

### SPRING SUPER VALUE

**\$95.95\***



Semi-Synthetic Oil Change up to 5 qts.  
Tire Rotation | Battery Service | Brake Inspection  
Multi-Point Inspection | OFFER EXPIRES 6/30/2022

Valid only at McKinsey Motors. Up to 5 quarts of semi-synthetic blend oil. Most cars and light trucks. Price plus tax & applicable fees, some restrictions apply. Present coupon at time of write-up. Offer not valid on previous purchases and can not be combined with any other offers. See service advisor for details.

## NOW HIRING: CLASS A CDL DRIVERS

COME JOIN OUR TEAM!

Competitive Pay • Paid Overtime  
Medical Benefits • Retirement Matching Plan

**APPLY ONLINE at www.sioxerosioncontrol.com or IN PERSON at 2818 Frontage Rd, Weatherford, OK 73096**

For more information call 580-772-0230



## Alliance Inc.

### NOW HIRING

- MECHANIC
- CLASS A CDL WITH TANKER ENDORSEMENT

Cordell Area  
Competitive Pay / Family Health Insurance/Paid Vacation/Retirement  
**Full Time Drivers Needed**

**NOW OFFERING SIGN ON BONUSES!**  
580-832-5558 OR  
HR@ALLIANCEINCORPORATED.COM  
**ALLIANCE INC,**  
22188 HWY 152, CORDELL, OK 73632







**ELK CITY STORAGE 580-799-0197**  
104 Shannon Drive, Elk City, OK



**Barbwire & Lace**

Refurbished Furniture • Home Decoration • Yard Art  
3109 W. 20th St., Elk City, OK • 580-303-0674

**Services**

**MAYFIELD**  
AUTOMOTIVE

DETAIL ACCESSORY SHOP  
580-799-7886

For the best detail in town come by or call us for all your detail & accessory needs, 580-799-7886. 4/16

**Wade Dump Trucking**, sand, dirt and gravel delivery, 580-799-2652. 24/36

**IPR (Phone Repair)** carrying all Iphone screens 6-12 pro, back glass repair 8-12 pro max, and casper screen protectors, call or text for quote 405-638-1427, located in Elk City. 4/16

**AC Demo**, tree removal and dirt work, 580-214-0303. 4/54



**PAINTING.DRYWALL FINISHING .STAIN CONCRETE.** Mark Melvin 580-297-1886 interior, exterior, cabinet painting. Fence.faux painting. 4/14

**C&C Construction** is a full line Construction company, we offer a wide variety of services and offer turn key metal buildings and barn houses, fully insured and references are available, free quotes call today, 580-706-1464. 4/13

**AC Demo**, tree removal and dirt work, 580-214-0303. 4/54

**NOTICE**

Fill Sand • Fill Dirt • Rock  
General Hauling  
- 10-Wheel Dumptruck -

**BEAUCHAMP TRUCKING**  
Call for Appt - 580-323-1704  
580-214-0076 - 580-309-0776

**INTEGRITY PAINTING AND REMODELING**

**INDOOR & OUTDOOR**

Carpentry, handyman, siding, windows and doors

**FREE ESTIMATES**  
**580-751-0114**

**AMARILLO HORSE SALES**  
SALE 2<sup>ND</sup> SATURDAY EACH MONTH  
TACK SALE 10AM - HORSE SALE 1PM

- No Consignment Fee
- Barn Rider Available
- Buyers & Sellers Market
- Online & Phone Bidding



**FACEBOOK:**  
Amarillo Horse Sales

- Riding Horses First, Loose Horses to Follow
  - On-site Coggins Available
  - Horse Transportation Available To & From Sale
- Contact Ty or Bill Tom

**CONTACT: Ty Hays (806)206-5440**  
**or Bill Tom Flemming (806)654-5340**  
Amarillo Livestock Auction Barn  
100 S. Manhattan St., Amarillo, TX 79104

**Storage Containers**

Custom Door & Window Installation

Larry White  
**580-995-4985**  
CREDIT CARDS NOW ACCEPTED

*Country Dove Gifts & Tea Room*

**DINING ROOM IS OPEN 11AM-2PM!**  
*Carryout Available.*

Store is open 9am-5:30pm - Monday-Saturday  
To Go orders welcome - 580-225-7028  
610 W. Third - Elk City, OK

- IN BUSINESS OVER 50 YEARS -

**JC's Trailer Sales**  
NEW & USED TRAILERS - ALL SIZES

Stock Trailers — 14 ft. to 32 ft.

**OILFIELD TOOL TRAILERS AVAILABLE!**

**CARGO TRAILERS**  
20x8 WW  
2/5200-lb. axles  
24x8 WW  
2/6000-lb. axles  
24x8 WW  
2/7000-lb. axles

**CARGO • FLOATS • UTILITY**

**HORSE & STOCK TRAILERS**

**580-225-3118**  
CELL: 580-243-8255 Jerry • 580-821-4996 Kimberly  
1 mile west of United • Elk City, Oklahoma

**KECO 96.5** & **KOOL 94**  
94.3 FM

for your **SEVERE WEATHER COVERAGE**

**Paragon Communications** wants to help keep you safe during Storm Season!

**Ding Ding sounder**

When severe weather rolls into the listening area, you'll hear a soft two-tone combination sounder on KECO & KOOL 94. This means severe weather is threatening, and that we're keeping an eye on it to let you know what's going on.

**So when the weather turns ugly, tune in to KECO 96.5 or KOOL 94.3 for the latest updates!**



# Schmidt Services LLC

**We build 24-30 Ton Overhead Feed Bins.**  
(Discount if you have your own tank)



**ONLY \$4,700**  
for complete set-up.

**580-497-7466**

### Classic Vehicles



**Classic 1954 Buick Super** 2door HT, restored in 1995, runs and operates, all original, \$17,500, 580-682-0777, Hobart OK

### Events

**Sunset Riders (band)** will play at the American Legion Post 41 at 1705 S. US 183, Clinton, OK, the 4th Friday of every month, 6:30PM-9:30PM, all ages welcome. Come enjoy live music and dance, alcohol and tobacco free. 4/15

### Garage/Estate Sale

**Binger Town wide garage sale**, Saturday April 2. 1/13

**Estate Sale:** 2401 Seminole Circle, Altus, OK, March 31, April 1 & 2 - 8AM-5PM. Baby grand piano, dining rooms, tables, buffet, china cabinets, couch, end tables, bedroom furniture, china, jewelry, washer/dryer, accent tables and chairs, sewing machine, entry way cabinet & mirror, more! 1/13

**ARAPAHO FLEA MARKET SATURDAY, APRIL 2nd**, 9-noon, 1318 C Street Arapaho, Oklahoma, antiques, household items, small furniture. 1/13

**BIG RED BARN SALE**, Open Friday and Saturday, 9:30 to 5:00, Sunday, 1:00 to 5:00, we have everything from, household goods to antiques! If you like flea market stuff you will love us, Check out our Facebook page "Big Red Barn Sale" and watch our Thursday evening video, Directions : From hwy 6 & hwy 152 south of Elk City. Go 3 miles south on hwy 6. 3 miles east on Rd 1220. 1/4 south. Big red and white barn. 580-450-0658. 17/25

### Trucks/Trailers

**2002 and 2007 Freightliner trucks**, 6 vacuum trailers, call or text 580-243-7456. 2/14

### Music

**Guitar lessons**, all ages, all levels, drums, bass, etc, if ad is mentioned you will receive a 10% discount for first month, Wilson Music, 580-379-3288, 580-331-7368. 4/13

### Seed

**Cowpea, Millet, and Mungbean**, contracts available at Apache Seed and Supply, Apache, OK, 580-588-3606 or cell 940-781-1087, lic#08011270. 4/14  
**Maton Rye seed** for sale, \$.18/lb, cleaned, license# 08000230, Tim Kilhoffer, 580-515-9894. 8/13

### Plumbing

**JON'S PLUMBING**  
Serving Cordell, Clinton, Elk City, Weatherford and the surrounding areas.  
**580-660-5670**  
**580-660-7190**  
Licensed • Bonded • Insured

### Penny News Advertising Deadline

Classifieds:  
Monday 5 p.m.  
Don't wait!!!  
Call 800-675-1416  
Elk City call  
580-225-7355

**STEEL CONSTRUCTION • ROOFING • STORM DAMAGE**

**FITZJARRELL CONSTRUCTION**

**Stan Fitzjarrell** **Josh Fitzjarrell**  
**580-445-0473** **580-445-0724**  
email: [sfjitz@yahoo.com](mailto:sfjitz@yahoo.com)  
[facebook.com/sfjitzjarrell](https://www.facebook.com/sfjitzjarrell)

**METAL OR WOOD CONSTRUCTION**  
**CATTLE SHADES • SHOPS • BARN • CARPORTS**

# Brock Whitson

Solar & Windmill Service,  
Drilling & Pump Installation



**Call Today to schedule appointment**

[Brock@whitsonwaterwell.com](mailto:Brock@whitsonwaterwell.com)

**580-613-0015**

23822 E 900 Rd, Thomas OK

**Fully Licensed and Insured. 13 Yrs Experience!**

[www.texasgunandknifeshows.com](http://www.texasgunandknifeshows.com)

# GUN SHOW

Like us on Facebook!

**WATCH FOR OUR UPCOMING SALES!**

**Kerrville Happy State Bank Expo Hall – Apr 9<sup>th</sup> & 10<sup>th</sup>**

**Abilene Convention Center – May 21<sup>st</sup> & 22<sup>nd</sup>**

Sat. 9-5 & Sun. 10-4 - Dealers Call (830)285-0575

# 2-D Trailer Sales & Service

## Full Line of Trailers & Truck Accessories



**BUY  
SELL  
TRADE**

**FINANCING  
AVAILABLE!**



**14-FT GOOSENECK  
BAR TOP TRAILER**



**MANY PRE-OWNED UTILITY TRAILERS  
Several Lengths to Choose From!**



**24-FT GR 3/4 TOP  
STOCK TRAILER**



**HORSE, CATTLE &  
UTILITY TRAILERS**

**Butler Spike & Arm Beds • Crown Line Beds • Cargo Craft  
B&W Trailer Hitches • GR Trailers • CM Trailers & Beds**

**TRAILER PARTS, SERVICE & REPAIR**

**535 S 4th ST, CLINTON • 580-323-3999 • [www.2dtrailers.com](http://www.2dtrailers.com)**



# INTEGRITY TREE SERVICE

## Tree Trimming and Removal

FREE ESTIMATES

### 580-751-0114

## WANT TO BUY/LEASE LAND

Local company looking for irrigated land to buy or lease in the Weatherford & Eakly area.

Please contact Chris @ 580-774-8568

### Farm Equipment



Sub soiler plow, \$3,000, Ripper plow, \$3,000, tires in good condition, Texola area, 806-256-3781. 4/15

John Deere 4895 Swather, 2700 HRS, 18 FT sickle header with new sections/drives, steel conditioners, \$32,000, Sentinel, OKLA. 580-393-1301. 4/16

2000 JD 566 Round Baler, 10,960 bales, been thru JD shop, shedded, net and twine, great shape mechanically, couple dings, Leedey, \$12,500, 580-821-4811. 2/14

JD 500 grain cart, excellent paint and tires, \$6,800, 580-445-8657. 4/15

30T bin; feed bunks; dog kennel panels; 580-541-8844. 4/14

JD 4455 MFWD, 15 speed, 6804 hours, front fenders, quick hitch, 3 hydraulics, duals, good paint and interior, new rear tires, \$51,000, Bill Cortney, Ft. Cobb, 580-550-0094, 405-643-2815. 4/14

Great Plains 606 NT 6' grain drill, brand new, \$14,000, located in Redon, OK, 404-317-6173.

Like brand new 8 ton Doyle MFG fertilizer and lime spreader with hyd spinners and engage, \$20,000, 580-574-5375. 4/13

WANT TO BUY: John Deere tractors, running or not, 580-243-8610.

Wanted: Tractors dead or running, 2WD or 4WD, any kind, any size up to 2020 models, 405-641-7728. 26/26

WANTED: JD SQUARE BALERS, 348-346-336-224-214 any condition, 405-641-7728. 29/26

T&S trip feeder 1500# with tarp and controls no rust and works great. \$2000, please text me at 405-659-2677, Thxs 4/50

### Garage Sales

Advertisers in the Penny News have reported good results. The cost is low -- as little as \$5.00. We have an estimated weekly readership of 70,000+.

Give us a call today!  
1-800-675-1416

BOSCH • STANADYNE  
• DELPHI • DENSO • AMBAC

## Campbell's Diesel Service

Authorized Diesel Injection Service  
EXCHANGE & REPAIR  
DIESEL PUMPS & INJECTORS  
Travis Hoover, Owner  
**580-347-2466**  
144 N. 3rd • Mountain View, OK

## EL RENO STEEL

3399 E. HWY 66 - El Reno, OK  
405-262-7077

### WE NOW HAVE PORTABLE PANELS AND H-BRACES

- 1 1/4 PIPE GATES  
4 FT. - 6 FT. - 8 FT. - 10 FT.  
12 FT. - 14 FT. - 16 FT. - 18 FT. - 20 FT.
- 2 3/8 PIPE GATES (4-FT. TALL 5-RAIL)  
8 FT. - 10 FT. - 12 FT.  
14 FT. - 16 FT. - 18 FT. - 20 FT.
- 2 3/8 PIPE GATES (5-FT. TALL 6-RAIL)

### CONTINUOUS FENCE

- 2 3/8-IN. STRUCTURAL PIPE
  - 2 7/8-IN. STRUCTURAL PIPE
- Angle Iron • Rebar • CEE Purlin • Channel • Beams • Sq. & Rec. Tubing • Expanded Metal • Pipe • Diamond Floor Plate • Plate • Sheets • Cable Clips • Cable Springs • Pipe Caps  
METAL BUILDING PRODUCTS

TCS - MOORELAND, OK  
**DANNY'S DIESEL & REPAIR**  
MOBILE REPAIR

### 24/7 Mobile Diesel Services

- DOT Inspections
- Engine Repair
- Road Calls
- Services & More

Located 3 miles East of Mooreland

CALL DANNY FOR DIESEL REPAIR  
**432.488.9554**

**SPECIAL PRICING EVERY SATURDAY**

**20% OFF EVERYTHING IN STOCK**  
Does Not Include Lumber Clearance Items, Smart Siding and Shingles

VALUE MART SURPLUS LLC  
120 MAIN ST. WOODWARD OK  
(580) 334-7169

**30% OFF**

20' X 6" FIBER LAP SIDING

**CEILING FANS**

**25% OFF**

**AIR BEDS \$59.99**

**50% OFF**

DOG FOOD & DOG TREATS

**FIREPLACE HEATERS**

**25% OFF**

# LEWIS Cattle Oiler Co.

Proven Effective Treatment All Year Long

Eliminate stress from flies, lice and other parasites  
Improve rate of gain  
Improves overall health of herd

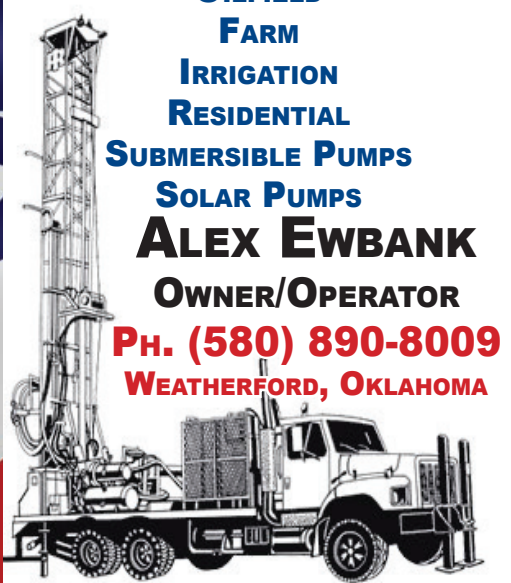
Mike Nesmith  
Elk City, Oklahoma  
**580-303-8770**



**NM**  
**CUSTOM FENCING & WELDING**  
 \$600 LABOR PER 1/4 MILE  
 Barbed Wire • Pipe Fence  
 Cattle Pens • Setting/Welding Corners  
 - Family Owned & Operated -  
**Nick Mackenna 580-210-6101**

**Robert ELLIOTT LLC**  
 Roofing  
 LIC#80002219  
**FREE INSPECTIONS & ESTIMATES**  
**580.515.3208**  
 CLINTON, OK 73601  
 METAL • FLAT • WOOD  
 COMPOSITION SHINGLES  
**BETTER SERVICE • BETTER QUALITY • BEST VALUE**

**ALEX EW BANK**  
**WATER WELL DRILLING**  
**4TH GENERATION**  
**INDUSTRY PROVIDER**  
**PUMP & GENERATOR RENTAL**  
**OILFIELD**  
**FARM**  
**IRRIGATION**  
**RESIDENTIAL**  
**SUBMERSIBLE PUMPS**  
**SOLAR PUMPS**  
**ALEX EW BANK**  
**OWNER/OPERATOR**  
**PH. (580) 890-8009**  
**WEATHERFORD, OKLAHOMA**  
**VETERAN DISCOUNT**



**TREESOME**  
**Tree Trimmers**  
 FREE ESTIMATES • FULLY INSURED  
**No job too big or too small!**  
**- Family owned and operated -**  
 Give us a call today!  
**Joey Porter - 580-497-7273**  
**Mindy Porter - 580-821-7030**

**APACHE HAY WAGON**  
  
**Eliminate 90% hay waste with the Apache Hay Wagon**

**EVERETT'S**  
 WELDING & REPAIR, INC.  
 580-995-4942 | US Hwy 34 & 60 • Vici, OK  
**WWW.EVERETTSWELDING.COM**

**Notices**

Spring forward to new beginnings! Al-Anon meeting: Mondays at noon, Codependency/ACA meeting: Wednesdays at noon and Wednesdays 6-7 p.m., all at The Promise Center, corner of First and Main in Elk City, BYO lunch if desired, coffee provided, Everyone is invited, no charge! Call 580-339-2637, 580-339-6534, 580-472-3472. 52/9

**Elk City AA, St. Matthews Church, 3001 E. 1100 Rd., Elk City, OK, Mon- Fri @12 pm, Southside Clubhouse, 105 Meadowridge Dr., Elk City, Ok, Mon-Sun @8pm. 52/4**

**A.A. Meeting, Thurs 7pm, Community of Christ, 201 E. Main St, Canton, Ok. 52/22**

Dance and Potluck supper, every Friday 7-9:30, DAV in Elk City, 312 N. Eastern, Call 580-303-0359 for info.

Canute Cemetery association, meeting March 6 @7 pm, Terry Jordans barn 305 S. 8th st, Canute.

Clinton Al-Anon meets on Wednesday at noon and on Saturday at 9am at the Clinton United Methodist Church, these are open meetings. tfc

A support group for bereaved parents, grandparents and siblings, The Compassionate Friends, meets the third Monday of each month at 7 pm at The Farm Bureau community room, 2702 West Modelle in Clinton, for further information, email tcfwesternoklahoma@gmail.com.

Cordell Recovery Group hosts NA meeting Fridays at 7pm AA meeting Tuesdays at 7pm located at 4th & College Church of Christ (middle door in alley behind building), Keith 580-660-5091.

Canton AA/NA meetings: Thurs 7-8pm Baptist Church, 301 W. Poplar, Canton, OK, contact number 580-886-3439.

www.menofcause.com. Bill Kern. Email: whkern@hotmail.com.

Stepmom S.O.S. (Support Group) at Prairie View Baptist Church of Elk City (at Highway 34S/140 Junction, Carter/Mangum Exit) first Thursday of each month at 6:30 PM. For details call the church at 580-225-2844 or e-mail stachia12@hotmail.com.

**Weatherford AA meets Tuesday 5:30PM, Wednesday 12:00PM, Thursday 6:30PM, Friday 6:30PM, Saturday 9:00AM, .at Weatherford food and resource center, use south entrance, 122 S 8th St, 580-614-1750.**

The Wear It Again Store & Warehouse are needing your donations of household goods, appliances, clothing, furniture and other sellable items. Contact Carlos at 580-323-3513. We will be happy to pick up your items free of charge!

**Weatherford Al-Anon meets Tuesdays at 8PM at Weatherford food and resource center, use south entrance, 122 S 8th St, 580-614-1750.**

**Elk City Al-Anon, friends & family of alcoholics, al-non.org, Mondays at noon, The Promise Center, 321 N Main St. Elk City, 580-339-2637**

**BARNES FEED SERVICE**  
 726-2120  
 HOBART, OKLA.  
**PEARSON LIVESTOCK EQUIPMENT**  
**T&S TRIP HOPPER FEEDERS**

- Starter Rations
- Grower Rations
- Shipping Rations
- Show Rations
- Feed Buggies
- Creep / Self Feeders
- Overhead Bins

**Cell 580-331-8022**

**SPECIAL SALE**  
**SATURDAY, APRIL 23rd • 11AM**  


**400 YOUNG REPLACEMENT COW/CALF PAIRS - Red Angus, Angus, Charolais**

**30 BULLS - Angus, Red Angus, Charolais & Composite Bulls**

- Bid in person or online
- Register at LMAAUCTION.COM
- Download the LMARINGSIDE APP

**Concessions Available!**

**HOBART STOCKYARDS**  
 Hwy. 183 North, Hobart, OK  
 Office 580-726-3306

Auctioneer **Dustin Glover**      Owner **Rex Flaming 580-331-8547**

*Where we want your business and we do appreciate it!*

*We've been*  
**BUILDING THE BEST SINCE '76**  
**THE NEW BD7600 BOX DRILL**



Introducing the new BD7600 Series Box Drills – with legendary durability and performance.

- NEW feeder cups meter by speed, adjusting for different application rates by changing the meter wheel rpm
- NEW box design and structure demonstrate industry-leading durability and flexibility
- The disc blade coulters are offset with alternating leading edges to enhance stability and reduce side-shifting
- Optional hydraulic drive reduces moving parts for easy operation

26' 2-Section      30' 3-Section      40' 3-Section

Visit your local Great Plains dealer or visit [www.GreatPlainsAg.com](http://www.GreatPlainsAg.com) to learn more.

**Great Plains**  
 "Harvest Starts Here."

**ROTHER BROS., INC**  
 HWY 183 NORTH, CLINTON, OK • 580-323-1981 • WWW.ROTHERBROS.COM



# “In Case You Missed It Last Week”

By Paragon News Director Jared Atha



## Early Voting Begins Thursday

Press release provided - Early voting begins Thursday March 31st for voters in Roger Mills County. Voters who will not be able to make it to the polls on Election Day, have the option of voting early at their County Election Board.

Roger Mills County Election Board Secretary, Jana Maddux, said early voting is open to all voters.

“You do not need to provide an excuse to vote early. Oklahoma allows early voting for all elections conducted through the State Election Board—from school board and municipal elections to state and federal elections. This is a great option for those who will be out of town on Election Day or who want to avoid long lines,” Maddux said.

Early voting is available Thursday March 31st and Friday April 1st from 8:00 a.m. to 6:00 p.m. at the County Election Board located at 503 E. Broadway, Cheyenne, Ok. Maddux reminds voters that early voting is not available at polling locations.

The Roger Mills County Election Board is located at 503 E. Broadway, Cheyenne, Ok and is open from 8:00 a.m. to 2:00 p.m., Monday through Friday. For questions, please contact the Election Board at 1-833-638-7999 ex. #7 or roger-millscounty@elections.ok.gov.

## Seiling Woman Leads Weatherford Police On High Speed Pursuit

March 24, 2022 - Coordinated efforts between two western Oklahoma police departments helped bring a high speed chase on Interstate 40 to a peaceful end.

As a result, a Seiling woman and Yukon man were arrested and charged in Custer County District Court last week.

According to a probable cause affidavit filed by the Weatherford Police Department, the incident took place during the early morning hours of March 16 when police were dispatched to a person attempting to break into locked cars. When police arrived, they were unable to find the suspects however did find a suspicious vehicle with a Colorado license plate. After an officer ran the plate's number, the vehicle would turn on and leave the scene at a high rate of speed.

Weatherford police would give chase that saw the vehicle drive through city streets at speeds near 70 miles per hour.

Eventually the vehicle would enter I-40, heading westbound on the east bound lanes. Officers would report that the vehicle would on multiple occasions nearly hit oncoming traffic, including semis. The chase would lead to the east side of Clinton near mile maker 69, where Clinton Police had set up a road block to prevent any more oncoming traffic from entering the interstate.

Finally, Weatherford Police would successfully pin the vehicle between patrol units in the median of the interstate, bringing the chase to an end.

With the help of Clinton Police, the driver, 28-year-old Taylor Charmayne Gore and a passenger 34-year-old Mark Blake Baker of Yukon were arrested without further incident.

The affidavit stated that a search of the vehicle would turn up various stolen items, along with a glass smoking pipe, pills that police believed to be Xanax, and possible marijuana.

Gore was charged with one count of endangering others while eluding, or attempting to elude police and one count of unlawful possession of drug paraphernalia – a misdemeanor.

## Sales Tax Numbers Show Economic Hope in Western Oklahoma

March 23, 2022 - January sales tax numbers are in and once again local municipalities are seeing strong numbers despite a down economy.

However one major city in western Oklahoma is below the \$1 million mark for the first time in nearly a year.

According to the Oklahoma Tax Commission's latest data, Elk City collected just under \$1 million in the month of January by taking in just over \$946,600, a 1.7% decrease when compared to a year ago.

Clinton was also down 7.5% bringing in a little over \$412,600. However Weatherford was over \$1 million, taking in just over \$1,024,000, a 13.7% increase when compared to last January.

Fellow I-40 community, Sayre was up a whopping 40% when compared to last year – bringing just over \$176,000.

Other area towns in western Oklahoma saw Hobart up 2% at just under \$105,700, Cordell up 4% bringing \$90,930 and change, and Mangum up 91% accumulating a little over \$81,500.



For more news scan this QR code with your phone or visit [kecofm.com/news](http://kecofm.com/news)



### Tree Services

Keith's Tree Trimming, seasoned/green firewood available, Stock up before winter! 580-660-0402.



Cedar Tree clearing for Western Oklahoma, Call Daniel Adams 580-819-1532. 4/15

Berry Tree Service: trimming & removal, commercial/residential, including cemetery maintenance, free estimates. I am insured. 580-471-9235, Chris Berry 24/31

BR Fence Co., cutting pasture tress with Turbo saw, 580-210-9533.

### Holman Tree Service

completely insured tree service - offering tree removal, trimming, pruning and stump removal at a reasonable price, call or text 580-715-0680 or 580-832-2098.

5/13

### FRANK'S TREE SERVICE

Tree Trimming & Removal  
Stump Removal  
Yard & Farm Clean-up  
580-821-6120

5/13

### Pedigreed Dog



or just plain Mutt?  
Penny News readers just might be the answer to your dog problems!  
220 S. Pioneer Rd. Elk City, OK  
1-800-675-1416  
580-225-7355

### '99 F350 & 3 Axle Trailer



Ford: 4wd, automatic, 7.3 diesel, rebuilt, \$11,500;  
Portable Building Moving Trailer: 3 axles, 3,500 lbs. each, 24,000 lb. winch, will haul up to 12'x20' building, \$4,000; or \$15,000 for both obo

Call 580-571-7410

## TURBO DIESEL OF OKLAHOMA

### Diesel Engine Parts

FOR TRUCKS, AG, INDUSTRIAL & AUTO

Overhaul kits • Turbos • Fan Clutches • Full Tilt Manifolds •  
Injectors • Pumps (OEM & Aftermarket available)

(800)366-4265

[www.turbodieselok.com](http://www.turbodieselok.com)

8628 W Reno • Oklahoma City, OK 73127

We Stock Wheels for Wilson Corrals



## OKLAHOMA ARTHRITIS CENTER



Tasha Redd  
APRN-CNP  
Elk City, OK



Kelsey Landon  
PA-C  
Enid, OK



Chad Schroeder  
PA-C  
Enid, OK

We specialize in the diagnosis and treatment of patients with rheumatology and autoimmune disorders.

### Our Team Provides....

- Safe, convenient, and cost effective solutions for infusion and injection patients
- Highly skilled nursing team trained and ready for complex health conditions
- Experienced medical providers overseeing infusion services
- Personalized care plans that focus on the best possible health outcomes for each patient



## OKLAHOMA INFUSION SERVICES

Request an appointment at [okarthritis.com](http://okarthritis.com)

- 2 locations to serve you -

2406 Bell Ave., Elk City, OK • 580-303-7944  
825 E. Owen K. Garriott Rd. Enid, OK • 580-701-2586





**Heard Auction & Real Estate**

**WWII COLLECTOR FIREARMS, RIFLES, NEW STOCK MODERN FIREARMS, SHOTGUNS, AMMO, AR-15'S AND MORE**

**ONLINE AUCTION - ENDS APRIL 7TH**

**HeardAuction.com • 580-323-6120  
3200 W. Modelle • Clinton, OK**

**Opportunities**

**\*Work From Home Opportunities\*** We need a few good people to get licenses as agents/brokers in the investment/insurance field, paid licenses and training! No Felonies, No experience required! Call 501- 786-8569 for more information. 4/13

**Auto Parts**

**Rebuilt GM 700 R4** transmission with converter and warranty, \$550 with same exchange, 405-872-8387. 4/16  
**Rebuilt GM turbo 350** transmission with converter and warranty, \$450 with same exchange, 405-872-8387.  
**Rebuilt GM turbo 400** transmission with converter and warranty, \$450 with same exchange, 405-872-8387. 4/16  
**Rebuilt Ford C4 or C6** and Dodge 727 or 904 transmission with converter and warranty, \$325 with same exchange, 405-872-8387. 4/16

**Ranch hand grill guard**, for late model Chevy GMC pickup, 580-774-8445. 4/16  
**Classic car tires, 2 new** Coker wide white wall, 650x 16 radio, \$500, 806-570-0038. 4/15

**Roofing**



**Pizano Construction** for roof repairs & replacements, floors, windows & cabinet installations! All your construction needs! Free estimates 405-664-4014. 8/16

**AUCTION**

**SAT. - APRIL 9 - 10 AM**

15342 Hwy. 54 - Mt. Park, OK 73559

Cooperton, OK-5mi. South.

Lawton -West on Hwy 62 then 13mi. North on Hwy.54

**Selling Real Estate & Personal Property**

197 Acres +/- all grass w/mobile home, barn, cattle pens divided into (3) tracts. Call for Showing, Terms & Information. Personal Property includes: 1929 Model A; 1953 Ford Coupe, V8; Skidsteer; Portable Welder; Pickups; Trucks; Tractors; Trailers; Collectibles; Saddles; Shop Tools; Rust, Junk and Lots of Salvage. View web for Pictures and Information. For Showing of Home, call Auction Co.

**BRIDGES AUCTION & SALES CO.**

Office: (580)492-5260

Billy: (580)591-2719 - Kelly: (580)695-5429

bridgesauction.com

**Real Estate Auction**

**SPECIAL 4 BEDROOM BRICK HOUSE IN SAYRE, OKLAHOMA**

**SATURDAY. APRIL 2, 2022 • 10:00 A.M.**

**SALE LOCATION:** Beckham County Activity Barn, Sayre, Oklahoma (Located East of the Historic Beckham County Courthouse)

**PROPERTY LOCATION:** 502 North 5th Street, Sayre, Oklahoma (Watch for auction signs)

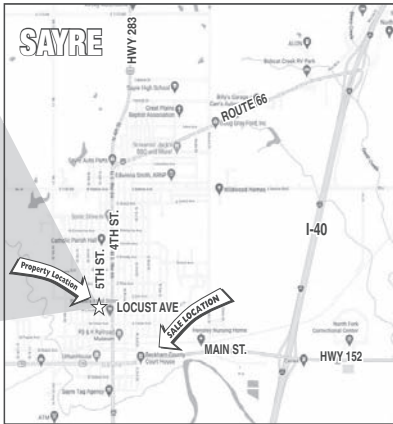
**AUCTIONEER'S STATEMENT:** It is a privilege to conduct the auction of this special 4 Bedroom Brick House located on a corner lot. We invite you to attend this special auction.

**PROPERTY DESCRIPTION:** This property is a split level 2,038 square foot 4 bedroom brick house that includes a living room, den, kitchen & dining room, 4 bedrooms, 2.5 bathrooms, 2 car attached garage and basement. The property has central heat & air and city utilities. This property would be a nice home in a good location close to grocery shopping & the area churches. We invite you to this special auction.

**REAL ESTATE TERMS:** 15% of the purchase price will be placed in escrow day of sale. Property will be conveyed by Warranty Deed. Possession will be at closing. All measurements are approximate. (Selling surface only)

**BROKER PARTICIPATION INVITED:**

Brokers must pre-register client 48 hours in advance of auction.



**OPEN HOUSE**

Sunday, March 20 & 27, 2022 from 1:00 to 3:00 p.m. or by appointment call 580-225-6743



**SELLERS: JIM & VINITA CRABB**

**Gene Cobb Auction & Realty**

Richard E. Cobb, CAI, AARE • Auctioneer/Real Estate Broker • Certified Appraiser

580-225-6743 • P.O. Box 982 • Elk City, Oklahoma 73648

Rhett D. Cobb • Licensed Auctioneer • Real Estate Broker - Texas & Oklahoma

806-206-1554 • P.O. Box 763 • Canyon, Texas 79015 • Texas Broker # 0549348 • TDLR # 16204 • Oklahoma Broker # 142951

We Act As Agents & Agents Only • Not Responsible For Accidents • Any Announcements Made Sale Day Supersedes All Other Announcements

Every effort has been made to assure the accuracy of the information with no guarantee of authenticity.

VISIT US ON THE WORLD WIDE WEB FOR A SCHEDULE OF UPCOMING AUCTIONS

AND TO VIEW MORE PICTURES OF THIS SALE: <http://www.genecobbauction.com>

**Spring Mineral Auction**

**APPROXIMATELY 1,200 ACRES OIL & GAS MINERAL RIGHTS**

**WEDNESDAY, APRIL 6, 2022 @ 10:00 A.M.**

**SALE SITE: THOMAS P. STAFFORD AIR & SPACE MUSEUM**

3000 Logan Rd., Weatherford, OK

I-40 Exit # 84 (Airport Rd.) - East of Weatherford, OK, then 1/2 mile West to the Thomas Stafford Air Port

FOR COMPLETE LIST OR TO BID ON-LINE  
Go to - [hinzauction.com](http://hinzauction.com)

**GOOD LINE-UP OF LOCAL MINERALS**  
Mineral tracts may be added or removed before day of sale.

Your Auction & Real Estate Experts Since 1957. Professionalism and honesty at a higher standard.



Jimmie Hinz - Broker  
(580) 774-4644

Brandon Hinz - Broker  
(580) 774-7396

Jim Hinz - Broker

[WWW.HINZAUCTION.COM](http://WWW.HINZAUCTION.COM)

LAND | MINERALS | ESTATE | EQUIPMENT | ANTIQUES | LIQUIDATIONS | APPRAISALS

[auktion@hinzauction.com](mailto:auktion@hinzauction.com)

Any announcements made day of sale supersede any and all written statements

**UPCOMING AUCTIONS**

Real Estate • Farm Equipment • Heavy Equipment • Your Auction

**KIOWA CO. FARMERS & RANCHERS AUCTION**

**SATURDAY, APRIL 2, 2022 • 10AM**

Lone Wolf, OK - Call to Consign. Daniel 580.471.3824 or Aubrey 580.393.4440

Guns and Ammo will sell 1st at 10am SHARP!

Too Many Items to list. Bid early on Proxibid. Check out Photos at [xitauctions.com](http://xitauctions.com)

BBQ Lunch by Senior Center. Unloading and Loading available.

**MR. ALBERT KORFMAN RETIREMENT AUCTION**

**SATURDAY, APRIL 30, 2022 • 10AM**

Custer City, OK

**TRACTORS** - John Deere 4640 Cab, Air, Duals, 3pt and Remotes, Quad Trans. (2 Speed Issues) 20.8" Rubber; John Deere 4430 Cab, Air, Duals, 3pt and Remotes, Quad Trans. 38" Rubber; John Deere 4020 Console Diesel, 3pt and Remotes, Syncro Trans with Deere 158 Loader; John Deere 4020 LP, 3pt and Remotes, Syncro Trans, New Tires with Deere 158 Loader

**HAY AND FARM MACHINERY** - John Deere 569 Mega Wide Plus- Like New 1,000 Bales Barn Kept; John Deere 535 Round Baler Barn Kept; John Deere 640 Hay Rake;

John Deere 1380 Swather, Center Pivot; 2- John Deere 8350 Grain Drills 16x8 Single Disc (Sell Separately); John Deere 8350 Grain Drill 20x8 Double Disc ; Javorsky 27ft Field Cultivator, Hyd Fold.; Sunflower #1321 Offset Disc 16ft Single Fold, Rock Flex; Schaffer 12ft Offset Disc Hyd. Lift.; Porky 8ft Dozer Blade for 4020 Tractor; Noble 26ft Field Cultivator, Hyd. Fold; Krause 12 Shank Chisel Plow, Hyd Lift; John Deere #400 Rotary Hoe, 4 Row; John Deere 95 Combine Barn Kept and Head

**TRAILERS AND TRUCKS:** 2000 Chevrolet Ext Cab 1500 Pickup; 1972 Chevrolet C50 Grain Truck - Clean ; 1967 Chevrolet C60 Grain Truck New Rear Tires; 2009 GR Gooseneck Stock Trailer 7x16 Tandem Axel (Like New) Barn Kept; EZ Haul Round Bale Trailer- Gooseneck 6 Bale- Nice; 2- 16ft Bumper Pull Livestock ; 2- Pickup Bed Trailers; 2- 12ft Utility Trailers; 2- 500 Gal Diesel Tanks on Trailers; 2- Overhead Fuel Tanks; 250-Gal LP Tank  
2 - Trailer Loads of Shop Tools and Supplies, 2-Generators

**OFFSITE EQUIPMENT:** White G955 Tractor - NOT RUNNING; John Deere 730 LP and Loader - NOT RUNNING; Schaffer 10 Offset - Needs Repairs; 10 Land Blade- Hyd Lift; 2- Bulk Cattle Feeders; Bar 6 Cake Feeder; 16ft Bumper Trailer; 14ft Enclosed Trailer; Calf Cradle; Squeeze Chute; 16' Cattle Guard  
2- 500 Gal LP Tanks, 250-Gal LP Tank

PICS/DETAILS AT [XITACTIONS.COM](http://XITACTIONS.COM) OR CONTACT AUBREY LATHAM FOR INFO 580-393-4440

**HIGH QUALITY FARM EQUIPMENT AUCTION**

DATE CHANGED TO

**SATURDAY, MAY 7, 2022 • 10AM**

Altus, OK - (Veteran's Drive and Hwy 62) -Go 7 Miles East on Hwy 62 to N2130 Rd then, North 2 Miles to E1620 Rd then, West 1/4 Mile to Sale Site. Watch for Signs. Visual Inspection Only Daylight Hours. Full inspection Week of Auction. Contact Aubrey Latham, Auctioneer 580-393-4440

**EQUIPMENT INCLUDES 29 LOTS OF HIGH QUALITY FARM EQUIPMENT (SEE PICS ON Proxibid.com or xitauctions.com)**

PICS/DETAILS AT [XITACTIONS.COM](http://XITACTIONS.COM) OR CONTACT AUBREY LATHAM FOR INFO 580-393-4440

**HOME IN SENTINEL, OK FOR SALE**

306 South Third Street, Sentinel, Okla. with 3 Lots - Asking \$39,500

**SELLERS: Assembly of God**

CONTACT AUBREY LATHAM, AUCTIONEER FOR MORE INFORMATION 580-393-4440

**www.xitauctions.com**

**AUBREY LATHAM, AUCTIONEER • 580-393-4440, SENTINEL, OK**

**DANIEL ROGERS, AUCTIONEER • 580-471-3824, LONE WOLF, OK**

**SHANE FULLERTON, SALES • 580-641-2004 MARLOW, OK**

LICENSED IN OKLAHOMA & TEXAS - OK RE #150319 TX LIC #10620

**STREET FARM & RANCH, BROKER • 806-292-9944, BRADLEY, OK - LIC#201036**



# ★ ★ ★ ★ ★ AUCTION CALENDAR ★ ★ ★ ★ ★

- **Randy Houston Estate – Owner**  
10AM Thurs., April 5th,  
6 miles South of Cotton Center, TX
- **David Watson – Owner**  
10AM Sat., April 12th, 10AM,  
Edmonson, TX
- **Edwin “Eddy” Schacher Estate – Owner**  
10AM Sat., April 23rd,  
17 Miles west of Tulia, TX. on HWY 86
- **Shelby L. Robinson Construction Co. Inc. (Retirement Auction)**  
10AM Sat., April 30th,  
NE of Amarillo, TX

*Five Star Auctioneers*  
P.O.Box 1030 Plainview, Texas 79073-1030  
Jim Sumners (806) 292-2149 Jimmy Reeves (806) 774-2684  
Donna Todd (806) 292-1990 License #10006  
Full listings @ 5StarAuctioneers.com

## Cattle

- ALLEE CATTLE CO.**  
reg. two year old Angus  
bulls for sale, non-creep  
fed, raised on native  
pasture, ready to go to  
work, Hammon, Ok, 580-  
339-1919. 8/20
- 20 Fancy heifer pairs,**  
\$2,200, 580-497-7466. 4/16
- Black and Red Angus**  
bulls for sale, 14-18 mos.  
old, \$2,250, located in  
Covington, call Chuck at  
405-368-1950. 4/16
- Black Limousin/Angus**  
bulls, 23 month old,  
grandsons of Nation-  
al Lim/Flex champion,  
stout, fertility tested,  
vaccinated and wormed,  
\$2,500, El Reno, 405-219-  
9101. 4/16
- 22 3-5 year old heavy bred**  
black cows, will start  
calving any day, 580-729-  
2299. 2/14



- BULLS FOR SALE,** Gelb-  
vieh & Balancer (Angus  
x Gelbvieh), black or red,  
gentle, tested, pollockcat-  
tle.com, 580-922-5629. 4/15
- POLLED HEREFORD**  
**BULL** Registered. Sired  
By Loewen Genesis G16.  
14 mo, BW 1.8, YW 102. Se-  
men tested, wormed, shots.  
\$2,750. Enid. 580-542-0424.  
2/13
- 60 black 3&4-yr-old heavy**  
bred cows, nice replace-  
ments, cows weigh 1285#,  
580-774-8445. 4/15
- 12 excellent red Angus**  
cows, 3-5 years, heavy  
bred, 580-774-8445. 4/15
- 20 black pairs, 3-5 years,**  
nice calves, 580-774-8445.
- 20 black 3 & 4-year-olds,**  
excellent pairs, cows weigh  
1285#, 580-774-8445. 4/15
- Red Angus heifers guaran-**  
teed open in Watonga, will  
be on wheat through graze  
out, Allen Cowan 478-919-  
5658. 8/19
- Charolais bulls for sale,**  
580-995-3190 or 580-821-  
4984. 4/15
- 25 6-8 yr old black cow**  
pairs, 14 bred heifers, will  
calve from now-April, 580-  
774-8290. 4/14
- 15 HEREFORD BULLS,**  
gentle, 2-yr olds and year-  
lings. HORNED&POLLED  
580-747-5605, VICI. 8/18
- Holder Land and Cattle LLC**  
- 2-year-old Angus bulls,  
contact Brent at 580-471-  
5842 or Mark at 580-471-  
7395. 4/14

- BULLS**  
Registered Angus bulls,  
18-23 mo., all shots, easy  
calvers, tame, guaranteed  
calves, \$1,995, El Reno, 405-  
823-5057. 8/18
- Angus and Sim Angus**  
bulls, Jerry Willard, 580-  
515-3059. 4/14

## Oklahoma Housing LLC

Mobile Homes  
Weatherford/Hydro OK

# Buy, SELL, Trade

## 405-808-2556

# GUN AUCTION

Online Only  
Now Through April 7th  
Preview 4:00-6:00 pm, April 7th  
Online Bidding Ends at 6:30 pm

**SMITH & WESSON • COLT • RUGER**  
WWII Collector Firearms, Rifles, Shotguns, Ammo,  
New Stock Modern Firearms, AR-15's and More  
**MAUSER • BROWNING • MOSSBERG**

**United Country Real Estate** | **Heard Auction & Real Estate**  
3200 W. Modelle, Clinton, OK  
580-323-6120  
**HeardAuction.HiBid.com**

## 640 Acres + (Surface Rights Only) Jackson County, Oklahoma

# Land Auction

Sat., April 30, 2022 • 10:15 a.m.

**AUCTION LOCATION: All 4 Tracts will sold  
from the Altus City Gymnasium  
(Sold in 4 separate Tracts)  
601 E. Katy Drive • Altus, Oklahoma**

**Heirs of Coy & Ruby Grimes, Owner**

**Brink Auction Service**  
TERRY H. BRINK, Auctioneer  
Frederick, Oklahoma 73542  
Mob.: 580/335-4126  
Lic. #OKS-118-006033  
www.brinkauction.com

## DOUBLE WIDE MOBILE HOME ON 10.02 ACRES ON THE SOUTH SIDE OF WEATHERFORD, OK JD LAWN TRACTOR - GUNS - FURNISHINGS

**THURSDAY, APRIL 14, 2022 @ 10:00 A.M.**

SALE SITE: 10339 N. 2390 Rd. – Which is from  
Weatherford, OK, 1 mile South on Custer Street,  
then West 1/8 mile on CR #1035, then North on  
CR # 2399.

A tract of land lying in the NE/4 of 18-12N-14, W.1.M.,  
Custer Co., OK. Containing approx. 10.02 Ac. +/-  
**Surface rights only.** The home has access  
from the South along a gravel drive way.



Home to sell first at 10:00 a.m.

A 1999, 52ft. x 28 ft. double wide mobile home with double car attached  
garage w/2 overhead doors, a large front porch and a fenced yard area  
with lots of mature trees. Home has 3 bedrooms, 2 baths, utility, kitchen &  
living room. The property is serviced by City Water & Electricity and personal  
septic system

Also on the property is:  
54 ft. x 30 ft., Metal Barn with 2 overhead doors & Partial Concrete Floor  
60 ft. x 15 ft. Lean-to Barn - 2 Storage Sheds - Underground storm shelter



The home is in need of some repair and will be sold "AS IS" in "WHERE IS CONDITION",  
with no warranties.

TERMS: 10% of the purchase price due day to sale to be placed in escrow, with Old Republic Title & Closing.  
Balance due at closing. Possession will be given at closing.

### PERSONAL PROPERTY

To be sold immediately after the home

**JD 1026R LAWN TRACTOR W/H120  
FRONT END LOADER-MOWER-  
DOZER BLADE-207 hrs. - VERY NICE  
TO BE SOLD AS ONE UNIT**

**HAND GUNS**  
Browning Black Label 1911 - .380  
SIG Sauer Gal. - .22 LRHV  
Ruger SR22 - .22 LR  
Ruger LCP .380 Auto

TERMS: PAYMENT IN FULL DAY  
OF SALE

Owners: Heirs of the Allen J. Maynard &  
Lottie Alene Maynard Estates



FULL LINE OF HOUSE-  
HOLD ITEMS INCLUDING  
WASHER-DRYER-COOK-  
STOVE-DEEP FREEZE-TV'S-  
FURNITURE  
LOTS of Collectables & Nick  
Knacks - House Full of Items

Many-many more items too  
numerous to mention

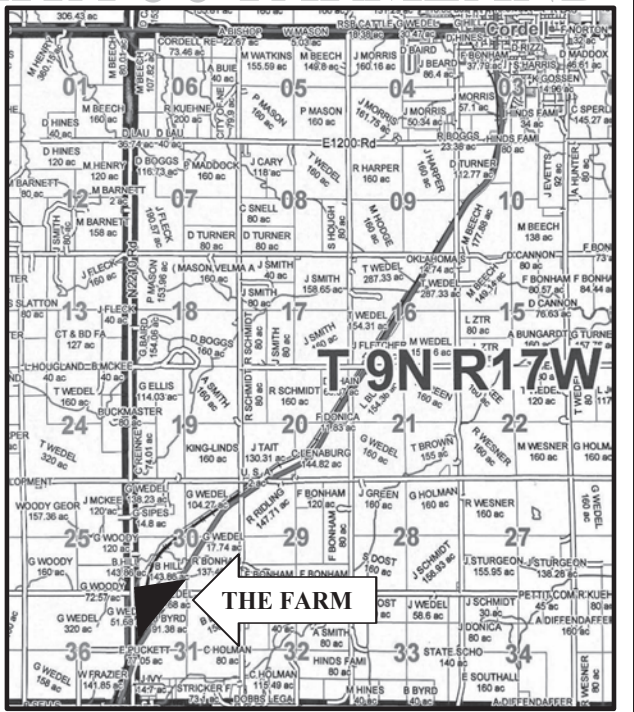
# PUBLIC AUCTION

Friday, April 8, 2022 – 10:00 am

**AUCTION LOCATION: From the stop light in Cordell, OK, go 6  
miles South To CR E1240, this will be the NE corner of the farm**

## 52 ACRES WASHITA CO FARMLAND

**Legal Desc:** Surface and surface rights only in  
and to all of Lots 1 and 2 and the East Half of  
the Northwest Quarter of Section 31, Township  
9 North, Range 17 WIM, Washita Co, OK, all  
lying West of the Highway right of way, LESS  
AND EXCEPT a tract of land described as  
follows: A tract of land in the Northwest  
Quarter of said Section 31, described as  
beginning at a point 1,000 feet North of the  
Southwest corner of the Northwest Quarter of  
said section; thence East 217 feet; thence North  
200 feet; thence West 217 feet; thence South  
200 feet to the point of beginning, and LESS  
AND EXCEPT highway rights-of-way and  
railroad right-of-way, containing 51.68 acres  
MOL



**Terms:** 10% of sale price of real estate is due  
on the day of the sale with remainder due at  
closing. Taxes will be prorated at closing.  
Possession given at closing.

**About The Farm:** This nice farm contains 51.68 acres MOL. The farm is currently all in grass with native  
and blue stem mixture. FSA data shows there is 19.73 acres of cropland and bases for the farm are 16.55  
acres wheat with a 32 bushel yield. The farm also has rural water, a water well and a nearly new solar pump.  
There is a pond and a 24' x 40' metal building with concrete floor and is wired for electricity. Good steel  
fences and gates surround the property. Anyone looking for a nice addition to their cattle operation or home  
site will want to give this farm a look!

## OWNER: ZONELLE GILLIHAN

**PUTMAN AUCTION COMPANY**  
CORDELL, OKLAHOMA

ROBERT PUTMAN  
Auctioneer/Broker

WENDY PUTMAN  
Cashier

"Service is our Strength"

1409 Pheasant Run - Cordell, Oklahoma 73632  
(580) 832-5714 Cell # (580) 660-1149 or (580) 660-0752  
email: putmanauction@att.net  
website: www.putmanauction.com

Like us on Facebook

Any announcements made day of sale supersedes all written announcements. Not responsible for accidents.

Your Auction & Real Estate Experts Since 1957. Professionalism and honesty at a higher standard.

**HINZ AUCTION & REALTY**

WWW.HINZAUCTION.COM  
LAND | MINERALS | ESTATE | EQUIPMENT | ANTIQUES | LIQUIDATIONS | APPRAISALS  
auction@hinzauction.com

Jimmie Hinz - Broker  
(580) 774-4644

Brandon Hinz - Broker  
(580) 774-7396

Jim Hinz - Broker



## Ken Carpenter Auction Calendar

**REILLY REAL ESTATE - ONLINE**  
Ends Wednesday, April 6th - 9:30AM

**CR OILFIELD & CR TOWING - ONLINE**  
Ends Sunday, April 10th - 1:00PM

**DUKE REAL ESTATE - ONLINE**  
Ends Monday, April 11th - 10:00AM

**REEL POWER & MORE - ONLINE**  
Ends Tuesday, April 12th - 10:00AM

**MARGARETTE J. DENNY ESTATE-ONLINE**  
Ends Thursday, April 14th - 9:00AM

**Need to liquidate your assets?  
GIVE US A CALL!**

**Ken Carpenter**  
Auction & Realty LLC

View photos & details at [kencarpenterauction.com](http://kencarpenterauction.com)

**132 W. Hwy 152, Mustang, OK**  
**405-620-1524**

## LA LIPPARD AUCTIONEERS

**619± ACRES \* ALFALFA COUNTY, OK**  
**HELENA/JET AREA**  
**PONDS \* GRASS PASTURE \* CROP**  
**LAND \* HUNTING \* FISHING**  
**E.L. AND BETTY JO METCALF FAMILY**  
**TRUST ABSOLUTE AUCTION**  
**JET COMMUNITY BUILDING,**  
Troy Lippard 580-747-6747

**FRI**  
**APR 1st**  
**10AM**  
Live/Online

[LippardAuctions.com](http://LippardAuctions.com) 580-237-7174

**MON**  
**APR 4th**  
**6PM**  
Online Only

**Roberson Collection Auction**  
**Juke Box - Neon Signs - Pinball - Slot**  
**Machine - Telephone Booth - Barber**  
**Chairs - Vintage Auto Parts**  
1023 S Perkins Rd, Stillwater OK

[LippardAuctions.com](http://LippardAuctions.com) 580-237-7174

**TUES**  
**APR 5th**  
**6PM**  
Online Only

**Multi Family Online Auction**  
**Sterling Silver - Antiques - Tools -**  
**Grandfather Clock - Hot Wheels -**  
**Matchbox - Vintage Dolls - Furniture -**  
**Glassware - Grape Decor**  
4125 W Owen K Garriott Old Stage Building (South Side) Enid OK Oakwood Mall

[LippardAuctions.com](http://LippardAuctions.com) 580-237-7174

**FRI**  
**APR 8th**  
**10AM**  
Live/Online

**5± ACRES \* BARNDOMINIUM HOME \* METAL SHOP BUILDING**  
**Douglas Skaggs Auction**  
8314 W. Buffalo Road, Hillsdale, OK  
Troy Lippard 580-747-6747

[LippardAuctions.com](http://LippardAuctions.com) 580-237-7174

**MON**  
**APR 11th**  
**1PM**  
Live/Online

**160± Acres \* Horse Stalls \* Riding Arena**  
**\* Multiple Ponds \* Hunting Paved Road**  
**\* Seminole Ok \* Home \* Swimming Pool**  
**Carlson Auction**  
13044 Old Hwy 99S, Seminole, Ok, 74868  
Chris Cameron 405-368-5946

[LippardAuctions.com](http://LippardAuctions.com) 580-237-7174

**MON**  
**APR 11th**  
**1PM**  
Live/Online

**40-45 Commercial Angus Cow/Calves**  
**Bruce Carlson Cattle Auction**  
(after real estate sales)  
13044 Old Hwy 99S, Seminole, Ok, 74868  
Chris Cameron 405-368-5946

### Cattle

(Continued from Pg 16)

35 5-6 year old fancy Nebraska origin heavy bred black cows. 5 calves on the ground, Aged and preg checked by local vet, 580-729-2299.

4/13

50 first calve Black Angus heifer pairs, Finks genetics, home raised, Frymire Farms, 580-303-8663.

16/24

Gomer bulls, fixed and ready to go to work 580-821-0814.

6/14

Selling Grass Fed, grass finished quarters of beef, processed and freezer ready, order now for summer delivery, Stacey Greb 580-678-0662.

12/19

Black Balancer and Angus bulls for sale, bulls are 14-16 mo., all polled and current on shots, lbw and high yearling weights, out of excellent genetics, Frymire Farms, 580-303-8663.

16/22

Fence Charger Repair-All brands, quick turnaround, reasonable rates, serving Oklahoma, Texas and Arkansas. Pioneer Electronics 580-603-0063 SE of Enid, OK.

12/17

Commercial Angus bulls, sons of the top EPD bulls in the Angus breed, low birth weight, tremendous weaning and yearling weight growth, fertility tested, wormed and shots up to date, Seyler/Roach Angus Cattle, Call Sandy 580-614-1150, Greenfield, OK.

10/14

FUCHS polled Hereford bulls tested and ready to go to work \$2,000 Sweetwater, OK, 580-729-0251.

15/20

Simm-Angus bulls for sale, Kelley Gwartney, 580-497-7303.

24/27

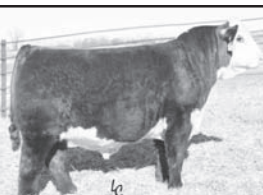
Polled Hereford bulls for sale, 580-254-0636.

Purebred Limousin Bulls - large selection of quality black and polled service age bulls, low birth weight, high weaning weight, good EPDs and disposition, breeding black and polled Limousin since 1974, Begert Limousin Ranch, Allison, TX, 806-375-2346.

24/22

50 first calve Black Angus heifer pairs, Finks genetics, home raised, Frymire Farms, 580-303-8663.

21/17



What Tops The Market?

Black Baldies

How do you get them?

Call Jimmie Johnson for Registered Polled Hereford Bulls

580-331-8534

Clinton, OK

All out of A.I. Sires

## BEEF FRESH FARM BEEF ANGUS

\$3.75 lb. on hanging weight for 1/2.

Processing Dates Available.

405-823-5057  
El Reno

5/13

## KERN HAY & CATTLE

• 15 Pairs 5 to 9 Years Old

• 16 Heifer Pairs

All calves weigh 400-500 lbs.

Have been with bulls since Jan. 17th

• 45 Spring Calf Pairs

Cows 4 to 9 years old.

Calves are 2 months or less.

Call Bill Kern  
580-660-1622



**RIFLES**  
**SHOTGUNS**  
**HANDGUNS**  
**GUN SAFES**  
**SCOPES**

**BINOCULARS**  
**RANGE FINDERS**

We stock a full range of outdoor equipment



**HOBART FARM & GARDEN**

580-726-3351 - 1030 S. Monroe, Hobart OK

[www.hobartfarmandgarden.com](http://www.hobartfarmandgarden.com)

HOURS: M-F 8AM-5:30PM • SAT 8AM-NOON

# Public Auction

Wednesday, April 6 2022 at 10 am

**Legal Description: Block 3, Lot 3, Taylor's 2nd addition in Watonga City**

**Sale will be held on site at 720 Villa Drive, Watonga, Ok 73772**

**Drive directions:** From the intersections of HWY 33 and HWY 270/281 in Watonga, Oklahoma go north to Airport Rd. then turn left (west) and travel to Villa Drive then turn left and go south to sale site. ➔ **Watch for signs!** ➔



**Open House Sunday, March 27 from 1 to 3 pm**

This 2,125 square foot (mol) 3 bedroom, 2 bath brick home has many amenities including an attached 2 car garage and a 22 kw Generac generator. There is a gas log fireplace, a game room and a small basement. The home sits on a large corner lot and has an underground sprinkler system. There is a storage building in the back yard.

*Sellers: The Heirs of Georgia L. Robison ~ Linda McPherson, Donald Robison, (The Estate Of) George Robison and Lonnie Rickey.*

Terms: 10% down on day of sale. Balance on delivery of merchantable title and completion of contract. Taxes prorated to closing. Possession will be given on closing. Prior to auction, buyer should satisfy themselves to size, condition etc. no warranty is given or implied. Sales subject to easements of record. Selling surface only. Sales subject to seller's approval. Sale not contingent on buyer obtaining financing. Any announcement on sale day supersedes all advertising. Sellers or Auctioneers not responsible for errors or omissions. All property sells in AS-IS condition. Not responsible for accidents. Sale is subject to confirmation approval by District court.

[www.ridenhoureauctions.com](http://www.ridenhoureauctions.com) for more pics!

## Ridenhour Auctions

**Chris Ridenhour**  
Sales Associate/Auctioneer  
405-313-7166

**John P. Ridenhour**  
Real Estate Broker/Auctioneer  
580-623-7902

We appreciate your business!

# CONSIGNMENT AUCTION



**10:00 a.m. • Saturday, May 7, 2022**

**Trucks • Tractors • Farm Equipment • Vehicles**  
**Oil Field Equipment • Recreational • Trailers**  
**- NO HOUSEHOLD ITEMS PLEASE! -**

Consign by April 11, 2022 for Advertising

Call Grant's Auction & Realty at (580) 225-0269

Sale Location: From Merritt Road & Rt. 66 (Hutch's West Side) West of Elk City, OK, go 5 1/2 Miles West on Hwy. 6 (Grant's Arena)



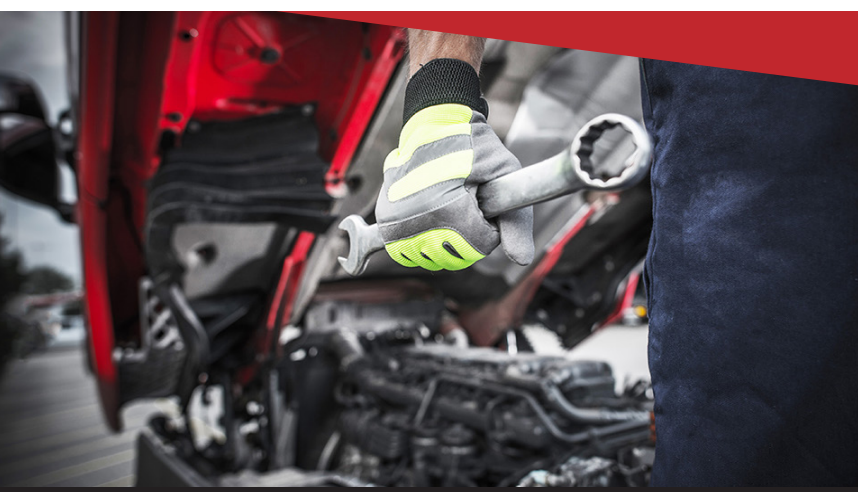
**Grant's Auction & Realty**  
580-225-0269 • "The Complete Liquidation Professionals"



Mike Grant Auctioneer/Sales Associate Texas License #13353 Mobile: 821-1186  
Cindy Grant Cashier/Real Estate Broker Elk City, OK Mobile: 821-1738  
FIND US ON THE WEB AT [www.grantsauction.com](http://www.grantsauction.com)  
Johnny Grant 1926-2010  
Jeremy Justus Auctioneer  
Monte Tucker Auctioneer & Sales Associate Sunny Point, America (580) 515-4477

ANY ANNOUNCEMENTS MADE DAY OF SALE SUPERSEDE ALL PREVIOUS WRITTEN OR ORAL STATEMENTS.





## GET TRUCKS & TRAILERS BACK ON THE ROAD

"From bumper to mudflap, we repair everything above, below and in between." - Brody Rice



## YOUR GO-TO DIESEL REPAIR SHOP

Located between Elk City & Sayre,  
2.5 miles north of the TA  
**Call 580-729-0386**



### Miscellaneous

**Warehouse, 4719 W 3rd Elk City, quality mattresses at low prices, as always I pay your tax, if you need more info call Betty 580-821-0386. 4/14**  
**Looking for hunting lease in , Texas, Oklahoma or Kansas, deer and turkey, 580-748-0217. 4/13**  
**MCABEE'S SEWING MACHINE VACUUM CLEANER SERVICE CENTER, since 1949, sales, service, most makes, scissors sharpened, downtown Elk City, 580-225-6265. 4/13**

### Lawn & Garden

**1985 318 JD Lawn tractor, hydraulics work power string, nice mower, \$1,500, 405-313-1671. 4/16**  
**JD's Small Engine Repair, lawnmowers, weed eaters, chainsaws, Hobart, OK, 580-450-0991. 12/20**



**MOWING SERVICES & YARD WORK 580-339-3979 (EZPZ)**

## GOBER Post Frame Buildings Shops, Garages, Houses, Agriculture, Commercial 1-405-595-0770

**30'x40'x10' - \$20,400**  
**30'x40'x12' - \$22,600**  
**30'x50'x10' - \$24,600**  
**30'x50'x12' - \$26,700**

With 4" Concrete, Fully Insulated, 1 Commercial Overhead, 1 Entry Door, #1 29 Ga. 40 yr. Painted Metal, Built on Your Level Site, Additional Sizes Available Mileage or Higher Concrete

**Protect Your Home And Property!!!** Prices May Apply  
 Make Sure Your Contractor is Following The Law.  
 Ask For General Liability and Workers Comp. Insurance

**www.goberconstruction.com**

## JD Tractor Repair

Certified John Deere Technicians

Specializing in John Deere Tractors



Full Service Repair  
On Site Service Calls

Jeff Hall, 580-821-1737

Tractor Repair David Tucker, 580-799-2726

3/4 Mile S. of Canute 4-way Stop • 580-472-3322

### SMITH & COMPANY'S AUCTION CALENDAR

#### REAL ESTATE AUCTION

Thursday, March 31st 10 a.m.  
1418 14th St. Woodward, OK

A 2 or 3 bedroom home on a nice sized lot in a good neighborhood with approx. 992 sq. ft. of living space. This is a one-owner home built in 1953. Living room, Kitchen, Utility, Bathroom, 2 Bedrooms, a large Family Room with built-ins that could also serve as a 3rd Bedroom and a large front and back yard. The home is heated by wall furnaces and cooled by refrigerated air window. This property has lots of potential!

*Seller: The Estate of Rosalie Cochran*

#### SPRING CONSIGNMENT AUCTION

Saturday, April 16th 10 a.m.

Smith & Co. Auction Facility, 10762 US Hwy 412, Mooreland, OK

Preview Items: April 4th - 16th 9 am - 5 pm

Load Out: April 18th - 22nd 9 am - 5 pm

\*On-Line bidding is available on ALL items. However, there is a number of items (too many to list) that will be offered on-line ONLY and not in the live auction. A complete catalog is available at [www.smithcoauctions.com](http://www.smithcoauctions.com) To bid, please register for the On-Line Only Auction. Bidding begins NOW and will begin to Conclude at 2 p.m. on April 17th. \*

Tractors, Pick-ups, 4 Wheelers, Campers, Dozer, Brush Beaters, Implements, HD Cattle Panels, Stock Trailers, Utility Trailers, Cars, Wood Working Equipment, Guns, Cattle Chutes, Enclosed Trailer, Skid Steer Attachments, Cake Feeder, H Braces & MORE!

Items added daily! View Pictures & Catalog at [smithcoauctions.com](http://smithcoauctions.com)

#### LAND AUCTION

Wednesday, April 27th 10 a.m.

Auction Location: Mutual Community Building, Mutual OK

Property Driving Directions: County Road 56 & NS 220 (Lenora Blacktop) off Highway 270 From Woodward Travel 22 miles SE on Hwy 270 then one mile south on County Road EW55. From Mutual Travel 5 miles east on Blacktop CR 54 and 2 miles south on Blacktop CR 220.

This is a good 160± acres of land, starting with good five wire fences. There are 118± acres of cropland with the balance in native grass, trees and a pond. There are several home sites along blacktop frontage NS220 (Lenora Blacktop) and county road access on the north side as well as the east. The farm ground is fenced separate from the grass and the deer hunting potential is excellent.

*Seller: Butts Family Trust*

#### REAL ESTATE AUCTION

Thursday, April 28th 10 a.m.

52643 S. County Road 218 NE of Mutual, OK

A Beautiful Setting with Big Trees Surrounding it, this 3 bedroom older home with approx. 1,560 sq. ft. of living space is a peaceful oasis from the hustle and bustle.

There's also a guest house, a detached two car garage, and a nice size 40' x 80' Quonset building with concrete floor. This property, in a very quiet area of a farming community, sits just one mile off of Hwy 270 with good access to Mutual, Sharon, Woodward, and Seiling.

*Seller: Beverly Ann Conwell Testamentary*



[www.SmithCoAuctions.com](http://www.SmithCoAuctions.com)  
580-254-3975

## FARM EQUIPMENT AUCTION

Northwest of Elk City  
Friday, April 22<sup>nd</sup> - 10 A.M.

Seller: Partain Farms LLC

**TRACTORS & HARVESTING** '98 JD 9200, 4 WD, 12/2 Trans., 4 Remotes, 520/85R 42, Raven Smart Steer, Shows 8,668 Hrs., SN:010470; '79 JD 4840, C&A, 3PT, Quick Hitch, Large PTO, 2 Remotes, 8 Speed Powershift, 20.8-38 Axle Mount Duals, Wheel Weights, Shows 8,030 Hrs., SN:007390R; '78 JD 4440, C&A, Quad Range, 3PT, Quick Hitch, PTO, 2 Remotes, 460/85R 38, Wheel Weights, OH at Approx. 7,500 Hrs., Shows 13,494 Hrs., SN:012554R 1254 RO Gator, 90' Booms, 20" Spacing, 4 Section Spray Control, 3 Tip Nozzle Bodies, Hyd. Tread Adjust, Eductor, 380/90R46, Raven Smart Steer, Raven SCS 661 Controller, 1200 Gal., 400 Hrs. on New Front Left Wheel Motor, Fresh Water Tank, Shows 8,010 Hrs., SN:125026100 1254 RO Gator, 90' Booms, 20" Spacing, 4 Section Spray Control, Hyd. Tread Adjust, Eductor, Auto Steer Valve, 420/80R46, Fresh Water Tank, 1200 Gal., Approx. 5,600 Hours, SN:125077203 \*Electrical Issue, Does Not Run, Has Been Struck By Lightning\*; Schaben Pull Type Sprayer, 1250 Gal., 100 Gal. Fresh Water, Hyd. Pump, Eductor, 60' Booms, Raven 440 Monitor, 380/90R46; JD 9600, Chopper, Bin Ext., Shows 4,016/2,735 Hrs. SN:646635; JD 9600, Chopper, SN:635771; JD 8820, Turbo, Parts Only; MacDon 962 Draper Header, 36', Pick Up Reels, Flotation Tires, fits JD 9600; MacDon 960 Draper Header, 36', Bat Reel, Transports, fits JD 9600, SN:97428; JD 930 Header, Pick Up Reel, Chain Drive; JD 230 Header w/ 4 Wheel Trl.; JD 1600A Swather, 1000 PTO; JD 1380 Swather; Case IH SCX 100 Swather, Hydra Swing, 16'; PT. Sprayer, SA, 500 Gal., 50' Booms, Hyd. Pump **TRUCKS** '05 Volvo Semi, Model VNL64T, D12 Volvo Eng., 10 Speed, TS, AR, 275/80R 22.5, All Alum., Shows 1,052,650 Mi.; '99 Freightliner Semi, C12 Eng., Super 10 Speed, PTO, TS, AR, 11R 22.5, All Alum., Shows 795K Mi.; '80 IH Grain Truck, Model F-2275, 855 Cummins, TS, 9 Speed, SR, Twin Ram Hoist, Mabar 24' X 48" Steel Bed, RO Tarp, Westfield Rear Mount Drill Fill Auger, Heat/Air Work, Shows 130K Mi.; GMC 5500 Bobtail, 350 Eng. (Approx. 5K Mi. on Overhaul), 4/2 Speed w/ 18" Steel Bed & Hoist, Shows 57K Mi.; '74 Dodge 600 Bobtail, 318 Eng., 4/2 Speed w/ 16" Steel Bed & Hoist, Drill Fill Auger, Shows 43K Mi. **TRAILERS** '10 GS Steel Hopper Trl., 32' X 100" X 68", SR, 11R24.5, RO Tarp, 21" Ag Hoppers, Side Chutes, Inspection Windows; '78 Timpt Hopper, 40' X 96" X 65", RO Tarp, SR, 11R 24.5; '11 Elite Flatbed Trl., Dual Tandems, 12,000 LB Axles, 40' + 5' Dovetail, Ramps, Convertible Dovetail, 6 Ratchets, Electric/Hyd. Brakes, Flex Control; '06 CM Stock Trl., GN, 6'8" X 32', 4 Comp., Triple Axle, Wood Floor, Swing/Slide Rear Gate, Bar/Tarp Top; Dugan 6' X 24' Stock Trl., GN, TA, 3 Comp., Triple Axle, Wood Floor, Bar/Tarp Top, Rear Butterfly Gates; '13 Hidden Valley HTD 36' Header Trl., SA, Torsion Axle; Shopbuilt 28' GN Hay Trl., SA, 6 Bale Individual Dump; 1000 Gal. Nurse Trl., 2 - 500 Gal. Tanks, TA, Spring Ride w/ 2" Transfer Pump w/ Honda GX 200; Shopbuilt GN Nurse Trl., 1600 Gal. Metal Tank, SA, Duals w/ 2" Gas Transfer Pump; 28' X 11' Swather Trl., Triple Axle, Ramps; 16' Flatbed Utility Trl.; Shopbuilt Fencing Trl. w/ EZ Roll II Wire Roller; Single Bale Trl., SA **VEHICLES & RECREATION** '18 Dodge 2500, 4 Door, 4x4, 6.4L Hemi, Auto, Airbags, Bramco Arm Bed, Shows 53K Mi., 1-Owner; '17 Ford F250, Ext. Cab, 4x4, 6.7L Powerstroke, Manual Airbags, Butler Arm Bed w/ T&S Trip Hopper Model P-826, Shows 76K Mi. **HAY & TILLAGE** GP. 3S-5000 HD Drill, 50', DF, DD, 15" Disc, Liquid Fert. w/ 500 Gal. Poly Tank, Ground Drive Pump, 4016/2735; JD 7100 Planter, 8R40, DF, 3PT w/ Lift Assist, Ground Driven Liquid Fert.; JD 567 Baler, Mega Wide, Cover Edge & Twine, 1000 PTO, w/Monitor, 18,784 Bales; JD 1610 Chisel, 32', Spring Shank, DF, Rear Hitch, Upgraded JD 3 Bar Harrows w/ Spring Down Pressure JD 1600 Chisel, 24', DF, Spring Shank, Harrows, 8" Sweeps; GP 16 Bar Harrow, Model 6642 HD, 42', Front Fold; JD 1518 Mower, 1000 PTO; JD 500 Grain Cart, Side Auger, RO Tarp (Needs Tarp); 36' Anhydrous Applicator, FF; JD 330 Double Offset Disc, 24', DF, 20" Front & Rear Discs; Krause 9 Shank Ripper, 3PT, Gauge Wheels; Big Oxe 9 Shank Ripper, 3PT, Gauge Wheels; JD 400 28' Rotary Hoe, 3PT, DF w/ Drill Discs & Spike Wheels; Vermeer R23A Hyd. Rake; Sunflower 18' Offset Disc, DF, 19 1/2" Front Blades, 21" Rear Blades; Shopbuilt 8R40 Cult., DF; Woods 20' Batwing Mower, DF, 1000 PTO; Shopbuilt 4 Row 40" Drill, 3PT; JD 700 Grinder Mixer, Bale Conveyor, 540 PTO; JD 2600 Plow, 6 Bottom, Buster Bar, Hyd. Adjust; JD 2600 Plow, 6 Bottom, Hyd. Adjust; 2 JD 28' Rotary Hoes, DF; Shopbuilt 8R40 Strip Till, DF, 3PT; Shopbuilt 8R40 Sweep, DF, 3PT **INDUSTRIAL, LIVESTOCK & MISC.** '21 OK Feed Bin 30 Ton OH, Divider, Bucket Chutes \*To Be Moved Within 30 Days\* (Exc. Condition); Farm King 480 Seed Cleaner, SA, Hyd. Drive, Auger, Rated at 1,000 BPH, (Exc. Condition); 2 Windmills; 9 Shopbuilt Rafters, 44' X 6'6"; 2 - 3000 Gal. White Poly Tanks; 2 - 1550 Gal. White Poly Tanks; JD 20 Gal. Air Compressor w/ Robin 6 HP Gas Eng.; B&W Flipover GN Hitch; Set of 28L-26 Turf Tread on JD (Came off JD Air Cart); Tee Jet Centerline 220 Light Bar Guidance



For Complete Listing, Detailed Information & Terms • [www.entzauction.com](http://www.entzauction.com)

**ENTZ Auction & Realty, Inc**  
 Roger Entz Auctioneer/Broker 75020  
[www.entzauction.com](http://www.entzauction.com) • 405.663.2200







**DAVIS IRON**  
 Sayre, OK • 580-928-8277  
 The Davis Family has been serving Western Oklahoma for over 50 years. We buy all types of metals - copper, brass radiators, batteries, iron, etc.  
 MON-FRI 9AM-4:30PM

**Automobiles**  
 2019 Ford Edge Titanium, loaded, 33,000 miles, older female owner, garage kept, \$35,000, text 580-309-1389. 4/15  
 1995 F250 XL, brown, 2-door, 5 spd trans., spike bed, engine overhauled 45,000 miles ago, \$4,250 obo, Hennessey OK, 580-334-2612. 4/15

2011 Hyundai Accent, good gas mileage, \$4,500, 580-318-7221. 4/16  
 Black 2016 Hundia Tuscan Eco Sports Utility 4D, great condition, never smoked in, 94,000 miles, \$15,800, 580-210-8446. 4/13  
 Top Dollar Paid for unwanted vehicles, no title no problem free towing Altus's and Lawton areas. Call Doug 580-483-5985. 13/22

2006 2 door Jeep, 2003 Holiday Rambler diesel pusher, 580-383-7777. 4/13  
 Paying cash for junk cars and trucks, Lawton, Duncan, Elgin, Fredrick and Hobart, \$200 and up for any complete cars, free towing, call Tim at, 580-583-3235. 12/14

**Mobile Homes**

**MOVE IN SPECIAL** on Rentals and Owner Financing in Weatherford and Elk City, Call for Details 405-808-2556. 4/14  
 14x16 mobile home, new plex plumbing from faucet to inlets, big eat-in kitchen, lots of upgraded cabinets, 8' closets, big bathroom, garden tub with shower, must be moved, 580-339-9390. 4/13

Mobile home for rent and owner finance, in Elk City and Weatherford, 405-808-2556. 4/13

**Top Hand Mobile Home Movers L.L.C.**



580-515-4818

**MCKINSEY**

Clinton, OK  
 580-323-0258  
 800-725-0258



**WE DELIVER!**  
 FROM OUR FLOOR TO YOUR DOOR!

Buy Online - Email - Chat  
 Phone - Text & We will Deliver your New or Used Vehicle to your Door!

IT'S THAT EASY!



**2017 NISSAN MURANO**



**PERFECT CONDITION!**  
**\$29,640**

Platinum, Leather, Moonroof, NAV, Low Miles, Much More!

**2014 GMC 1500**



**SHARP TRUCK!**  
**\$26,796**

Crew, SLT, Local Trade, Leather, New Tires

**2017 FORD F250**



**LOADED!**  
**\$63,870**

Crew, 4x4, Platinum, Power Stroke, 1-Owner

**2016 GMC YUKON**



**SUPER CLEAN!**  
**\$33,443**

SLT, Leather, DVD, NAV, Quad Buckets, Much More!

**WE PAY CASH FOR CARS ON THE SPOT!**  
 Any Make or Model!  
 580-323-0259

Good used cars are in High Demand right now. We are looking to pay TOP DOLLAR for yours even if you don't buy ours!

**2014 GMC 1500**



**LOTS OF EXTRAS!**  
**\$29,740**

Crew, 4x4, SLE, Local Trade, Low Miles, Loaded!

**2015 FORD F250**



**HURRY IN!**  
**\$54,470**

Crew, 4x4, Lariat, Power Stroke, 1-Owner, Leather, Cannon Ball Bed

**2014 CHEVY 1500**



**SUPER SHARP!**  
**\$33,780**

Crew, 4x4, LT, Leather, Lift Kit, Custom Wheels & More

**2007 CHEVY 1500**



**4X4**  
**\$13,505**

Crew, LT3, Leather, Z71, Loaded with Extras!

**2019 CHEVY 1500**



**WONT LAST!**  
**\$30,400**

4x4, LT, 5.3 V8, All Power, Lots of Extras!

**WWW.MCKINSEYMOTORS.COM**

**- NEW OR RENEWAL OMMMA CARD -**  
**\$45 Physician Free + Applicable State Fee**  
 Nurse owned/operated dispensary - Your advocate for care.

**MARCH MADNESS**

**SPEND \$100, get INFUSED PRE-ROLL for \$.01**

**FLOWER SPECIALS**  
 Top Shelf 1/8-\$45 1/4-\$80 1/2-\$145  
 Mid Shelf 1/8-\$35 1/4-\$65 1/2-\$120  
 Bottom Shelf 1/8-\$20 1/4-\$38 1/2-\$75  
 TRIM .99-\$1.99g, \$24.99-\$35.99oz  
 Small Bud \$45.99oz

**NEW FLOWER**  
**COTTON CANDY - Indica**  
 16.18% THC, 1.92% Terps  
**KOOL WHIP - Indica**  
 20.15% THC 2.55% Terps

**EDIBLES Starting at**  
 Single (20mg) \$4.99 up to (2500mg) for \$74.99  
**SELECT VAPES - \$16.99**  
**SELECT DABS - \$11.99 (1g)**  
**EDIBLES & TOPICALS**  
 Buy 1, Get 1 15% OFF  
**PRE-ROLLS 4/\$1.00**

**GROW SUPPLIES AVAILABLE!**  
 New & Used Grow Lights, Soil and Grow Bags

**DON'T MISS OUR WEEKEND FLASH SALES!!**  
**GREAT DEALS ON PRE-ROLLS, CARTS, DABS & MORE!**

**STOP BY for a chance to WIN GREAT PRIZES!**  
**DAILY DEALS & WEEKEND FLASH SPECIALS!**  
**ENTER OUR MONTHLY DRAWING!**  
 Lots of New Product & New Strains Weekly!  
**All PRICES OTD!**  
 Valid Through March 2022

We offer 100% organic high THC (36%) and CBD (18%) flower  
 Like us on Facebook  
 Find us on Leafly

HOURS: MONDAY 10AM-6PM; TUESDAY-SATURDAY 9AM-6PM; CLOSED SUNDAY

**GREEN ACRES PHARM**  
 13579 Hwy. 8, Fairview, OK • 580-922-1107  
 GENESIS 9:3 NKJV "Every moving thing that lives shall be food for you. I have given you all things, even as the green herbs."

**M Metal Mart**  
 THE RIGHT MATERIALS FOR THE RIGHT PRICE!

**OUR LOBBY IS FULLY OPEN**

|  |   |  |  |
|--|---|--|--|
| <b>STEEL ROOFING</b><br><br>Residential & Commercial   | <b>METAL BUILDINGS</b><br><br>Prefabricated & Weld-up Buildings | <b>ROLL-UP DOORS</b><br><br>& Walk Doors     | <b>INSULATION</b><br><br>Vinyl Back & Reflective       |
| <b>PANELS</b><br><br>MAX-RIB "R"-PANEL                 | <b>CARPORTS</b><br><br>Carport                                  | <b>CUSTOM TRIM</b><br><br>Fabricated on-site | <b>TOOLS</b><br><br>Blades & Hex Drivers               |
| <b>SKY LIGHTS</b><br><br>Polycarbonate Skylight Panels | <b>RIDGE VENTS</b><br><br>Ridge Vents                           | <b>RECEIVER CHANNEL</b><br><br>Square Tubing | <b>PANEL CLOSURES</b><br><br>Universal & Vent Closures |

**METALMARTS.COM**

NEW LOCATION: 10280 I-27 in Amarillo, TX • 1-800-677-2519 • 1-806-622-2230



# #1 Import Service Department from Amarillo to OKC

OIL CHANGES  
BRAKE JOBS  
TRANS FLUSHES

# WINDY NISSAN

## FREE DELIVERY

### Anywhere in Oklahoma!

TIRE ROTATIONS  
FULL DETAILS  
ACCESSORIES

Financing Available!

Top Dollar Trade-In!

114 Access Rd, Elk City OK | 580-225-4500 | www.WindyNissan.com



**2022 NISSAN MURANO**  
**\$500**  
off msrp\*

**2022 NISSAN FRONTIER**  
**\$500**  
off msrp\*

**2022 NISSAN TITAN**  
**\$2,000**  
off msrp\*

\*See Dealer for Details.



**2022 NISSAN ROGUE SPORT**  
32 MPG Hwy, Blind Spot, High Beam Assist  
**\$26,310**



**2022 NISSAN ROGUE SL**  
34 MPG Hwy, Premium Pkg, Moon Roof  
**\$35,680**



**2022 NISSAN MURANO SL**  
Apple CarPlay, Blind Spot, Lane Departure  
**\$41,980**



**2022 NISSAN MURANO S**  
Push Button Start, Bluetooth, Rear View  
**\$34,220**



**2022 NISSAN MURANO SL**  
V6, 27 MPG Hwy, Pano Roof, Leather  
**\$44,735**



**2022 NISSAN ALTIMA SR**  
37 MPG Hwy, Apple CarPlay, Remote Start  
**\$28,050**



**2022 NISSAN SENTRA SV**  
39 MPG Hwy, All Weather Pkg, Tan Leather  
**\$25,130**



**2022 NISSAN MAXIMA SR**  
30 MPG Hwy, Memory Seat, Moonroof  
**\$44,095**



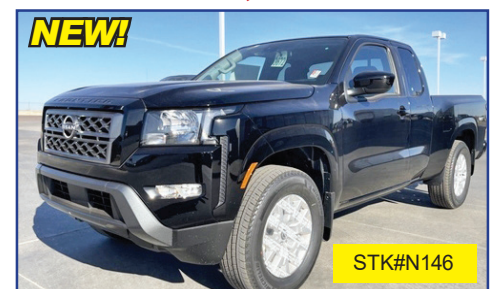
**2022 NISSAN TITAN**  
Crew Cab, Pro-4X, Off-Road Shocks, NAV  
**\$58,670**



**2022 NISSAN TITAN**  
Crew Cab, Pro-4X, LED Lights  
**\$55,580**



**2022 NISSAN TITAN**  
Crew Cab, Pro-4X, Bedliner, Leather  
**\$59,065**



**2022 NISSAN FRONTIER SV**  
King Cab, Tech Pkg, Convenience Pkg.  
**\$35,885**



**2022 NISSAN FRONTIER**  
Crew Cab, SV, Sport Bar, Off-Road Steps  
**\$40,215**



**2022 NISSAN FRONTIER SV**  
Crew Cab, 24 MPG Hwy, Apple CarPlay  
**\$33,335**



**2022 NISSAN FRONTIER SV**  
Crew Cab, 24 MPG Hwy, 9-Sp Auto  
**\$33,335**



**2022 NISSAN FRONTIER SV**  
Crew Cab, 24 MPG Hwy, Power Options  
**\$33,285**



**2018 KIA OPTIMA LX**  
36 MPG Hwy, Remote Keyless Entry  
**\$18,493**



**2011 FORD EXPEDITION LIMITED**  
20 MPG Hwy, Sirius Radio, PowerOptions  
**\$13,837**



**2022 NISSAN ALTIMA SR**  
37MPY Hwy, Blind Spot, Midnight Edition  
**\$31,999**



**2020 DODGE GRAND CARAVAN GT**  
25 MPG Hwy, Brake Assist, Heated Seats  
**\$28,616**

**NO REASONABLE OFFER TURNED DOWN! WE WANT YOUR BUSINESS!**